

SLCO1A2 Rabbit pAb

货号: **AYP13230**

产品信息

反应	Human
宿主	Rabbit
克隆性	Polyclonal
预测反应	WB: Rattus norvegicus
应用	WB
推荐浓度	WB: 1:1000 - 1:5000
理论分子量	64kDa/74kDa
实测分子量	74KDa
形式	Liquid
保存条件	Store at -20°C. Avoid freeze / thaw cycles. Buffer: PBS with 0.01% thiomersal,50% glycerol,pH7.3.
偶联物	Unconjugated
阳性对照	Rat liver
细胞定位	Cell membrane,Multi-pass membrane protein
纯化	Affinity purification

抗原信息

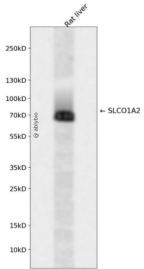
抗原信息	Recombinant fusion protein containing a sequence corresponding to amino acids 606-670 of human SLCO 1A2 (NP_602307.1).
序列	AALRGSSFVPALIIILLRKHLPGENASSGTELIETKVKGKENECKDIYQKSTVLKDDELKTKL

靶点信息

研究背景	This gene encodes a sodium-independent transporter which mediates cellular uptake of organic ions in the liver. Its substrates include bile acids, bromosulphophthalein, and some steroidal compounds. The protein is a member of the SLC21A family of solute carriers. Alternative splicing of this gene results in multiple transcript variants.
基因ID	6579

基因名	SLC01A2
Swiss	P46721
别名	SLC01A2;OATP;OATP-A;OATP1A2;SLC21A3

产品验证



Western blot analysis of SLC01A2 expressed in Rat liver using SLC01A2 Rabbit pAb at 1:1000. Secondary antibody: HRP Goat Anti-Rabbit IgG (H+L) at 1:5000. Lysates/proteins: 30ug per lane. Blocking buffer: 5% non-fat dry milk in TBST. Detection: ECL Enhanced Kit. Exposure time: 120s.

实验步骤

访问官网浏览详情: www.ablybio.cn