

# TADA2A Rabbit pAb

货号: AYP13229

## 产品信息

反应	Human,Mouse,Rat
宿主	Rabbit
克隆性	Polyclonal
预测反应	<b>WB:</b> Homo sapiens
应用	<a href="#">WB</a>
推荐浓度	<b>WB:</b> 1:500 - 1:2000
理论分子量	36kDa/51kDa
实测分子量	52kDa
形式	Liquid
保存条件	Store at -20°C. Avoid freeze / thaw cycles. Buffer: PBS with 0.02% sodium azide,50% glycerol,pH7.3.
偶联物	Unconjugated
阳性对照	BT-474,Mouse brain,Mouse skeletal muscle,Rat brain
细胞定位	Chromosome,Nucleus
纯化	Affinity purification

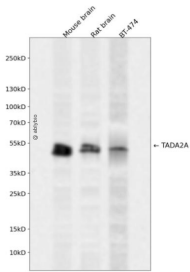
## 抗原信息

抗原信息	Recombinant fusion protein containing a sequence corresponding to amino acids 1-443 of human TADA2 A (NP_001159577.2).
序列	MDRLGSFSNDPSDKPPCRGCSSYLMEPIKCAECGPPPFLLCLQCFTRGFYKKHQSDHTYEIMTSDFPVLDPSWTAQEE MALLEAVMDCGFGNWQDVANQMCTKTKEECEKHMKHFINNPLFASTLLNLKQAEAAKTADTAIPFHSTDDPPRPTFDSL LSRDMAGYMPARADFIEEFDNIAEWDLRDIDFVEDDSDILHALKMAVVDIYHSRLKERQRRKKIIRDHGLINLRKFQLMER RYPKEVQDLYETMRRFARIVGPVEHDKFIESHALEFELRREIKRLQEYRTAGITNFCSARTYDHLKKTREEERLKRMLSEVLQ YIQDSSACQWLRRQADIDSGLSIPMASNSGRRSAPPLNLTGLPGTEKLEKEKELCQMVRVLPVPGAYLEYKSALLNECN KQGLRLAQARALIKIDVKNKTRKIYDFLIREGYITKG

## 靶点信息

研究背景	Many DNA-binding transcriptional activator proteins enhance the initiation rate of RNA polymerase II-mediated gene transcription by interacting functionally with the general transcription machinery bound at the basal promoter. Adaptor proteins are usually required for this activation, possibly to acetylate and destabilize nucleosomes, thereby relieving chromatin constraints at the promoter. The protein encoded by this gene is a transcriptional activator adaptor and has been found to be part of the PCAF histone acetylase complex. Several alternatively spliced transcript variants encoding different isoforms of this gene have been described, but the full-length nature of some of these variants has not been determined.
基因ID	6871
基因名	TADA2A
Swiss	O75478
别名	TADA2A;ADA2;ADA2A;KL04P;TADA2L;hADA2

## 产品验证



Western blot analysis of TADA2A expressed in Mouse brain, Rat brain, BT-474 using TADA2A Rabbit pAb at 1:1000. Secondary antibody: HRP Goat Anti-Rabbit IgG (H+L) at 1:5000. Lysates/proteins: 30ug per lane. Blocking buffer: 5% non-fat dry milk in TBST. Detection: ECL Enhanced Kit. Exposure time: 120s.

## 实验步骤

访问官网浏览详情: [www.ablybio.cn](http://www.ablybio.cn)