

# REV1 Rabbit pAb

货号: **AYP13223**

## 产品信息

反应	Human
宿主	Rabbit
克隆性	Polyclonal
预测反应	<b>WB:</b> Homo sapiens
应用	<a href="#">WB</a>
推荐浓度	<b>WB:</b> 1:500 - 1:2000
理论分子量	43kDa/138kDa
实测分子量	145kDa
形式	Liquid
保存条件	Store at -20°C. Avoid freeze / thaw cycles. Buffer: PBS with 0.02% sodium azide, 50% glycerol, pH7.3.
偶联物	Unconjugated
阳性对照	MCF7
细胞定位	Nucleus
纯化	Affinity purification

## 抗原信息

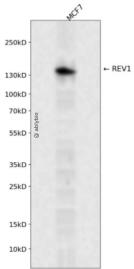
抗原信息	Recombinant fusion protein containing a sequence corresponding to amino acids 120-345 of human REV1 (NP_057400.1).
序列	AGRLLSYIPYQLYTKQSSVQKGLSFNPVCRPEDPLPGPSNIAKQLNNRVNHIVKKIETENEVKVNGMNSWNEEDENNDFFSFDLEQTSPGRKQNGIPHRGSTAIFNGHTPSSNGALKTQDCLVPMVNSVASRLSPAFSQEEDKAEKSSTDFRDCTLQQLQQSTRNTDALRNPHTNSFSLSPHLSNTKINGAHHSTVQGPSSTKSTSSVSTFSKAAPSVPSKPSD

## 靶点信息

研究背景	This gene encodes a protein with similarity to the <i>S. cerevisiae</i> mutagenesis protein Rev1. The Rev1 proteins contain a BRCT domain, which is important in protein-protein interactions. A suggested role for the human Rev1-like protein is as a scaffold that recruits DNA polymerases involved in translesion synthesis (TLS) of damaged DNA.
基因ID	51455

基因名	REV1
Swiss	Q9UBZ9
别名	REV1;AIBP80;REV1L

## 产品验证



Western blot analysis of REV1 expressed in MCF7 using REV1 Rabbit pAb at 1:1000. Secondary antibody: HRP Goat Anti-Rabbit IgG (H+L) at 1:5000. Lysates/proteins: 30ug per lane. Blocking buffer: 5% non-fat dry milk in TBST. Detection: ECL Enhanced Kit. Exposure time: 120s.

## 实验步骤

访问官网浏览详情: [www.ablybio.cn](http://www.ablybio.cn)