

PPP2R3B Rabbit pAb

货号: **AYP13222**

产品信息

| | |
|-------|--------------------------------------------------------------------------------------------------------|
| 反应 | Human,Mouse |
| 宿主 | Rabbit |
| 克隆性 | Polyclonal |
| 预测反应 | WB: Homo sapiens |
| 应用 | WB |
| 推荐浓度 | WB: 1:500 - 1:2000 |
| 理论分子量 | 20kDa/65kDa |
| 实测分子量 | 80kDa |
| 形式 | Liquid |
| 保存条件 | Store at -20°C. Avoid freeze / thaw cycles. Buffer: PBS with 0.02% sodium azide,50% glycerol,pH7.3. |
| 偶联物 | Unconjugated |
| 阳性对照 | HeLa,SW620,BT-474,SKOV3,mouse skeletal muscle |
| 细胞定位 | Nucleus |
| 纯化 | Affinity purification |

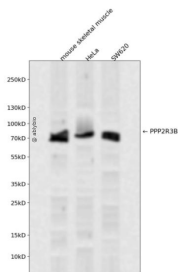
抗原信息

| | |
|------|------------------------------------------------------------------------------------------------------------------------------------------------------------------------------------------------------------------------------------------|
| 抗原信息 | Recombinant fusion protein containing a sequence corresponding to amino acids 356-575 of human PPP2R3B (NP_037371.2). |
| 序列 | FSGAVTRGRKVKQKEGKISYADFVWFLISEEDKKTPTSIEYWFRCMDLDGDGALSMFELEYFYEEQCRRLD SMAIEALPFQD CLCQMLDLVKPRTEGKITLQDLKRCKLANVFFDTFFNIEKYLDHEQKEQISLLRDGDSGGPELSDWEKYAAEEYDILVAEET AGEPWEDGF EAELSPVEQKLSALRSPLAQRPF FEAPSPLGAVDLYEYACGDEDLEPL |

靶点信息

| | |
|-------|---------------------------------------------------------------------------------------------------------------------------------------------------------------------------------------------------------------------------------------------------------------------------------------------------------------------------------------------------------------------------------------------------------------------------------------------------------------------------------------------------------------------------------------------------------------------------------------------------------------------------------------------------------------------------------------------------------------------------------------------------------------------------------------------|
| 研究背景 | Protein phosphatase 2 (formerly named type 2A) is one of the four major Ser/Thr phosphatases and is implicated in the negative control of cell growth and division. Protein phosphatase 2 holoenzymes are heterotrimeric proteins composed of a structural subunit A, a catalytic subunit C, and a regulatory subunit B. The regulatory subunit is encoded by a diverse set of genes that have been grouped into the B/PR55, B'/PR61, and B''/PR72 families. These different regulatory subunits confer distinct enzymatic specificities and intracellular localizations to the holoenzyme. The product of this gene belongs to the B'' family. The B'' family has been further divided into subfamilies. The product of this gene belongs to the beta subfamily of regulatory subunit B''. |
| 基因ID | 28227 |
| 基因名 | PPP2R3B |
| Swiss | Q9Y5P8 |
| 别名 | PPP2R3B;NYREN8;PPP2R3L;PPP2R3LY;PR48;PR70 |

产品验证



Western blot analysis of PPP2R3B expressed in mouse skeletal muscle, HeLa, SW620 using PPP2R3B Rabbit pAb at 1:1000. Secondary antibody: HRP Goat Anti-Rabbit IgG (H+L) at 1:5000. Lysates/proteins: 30 ug per lane. Blocking buffer: 5% non-fat dry milk in TBST. Detection: ECL Enhanced Kit. Exposure time: 120s.

实验步骤

访问官网浏览详情: www.ablybio.cn