

ALDH7A1 Rabbit pAb

货号: AYP13212

产品信息

反应	Human,Mouse,Rat
宿主	Rabbit
克隆性	Polyclonal
预测反应	WB: Mus musculus
应用	WB IHC IF/ICC
推荐浓度	WB: 1:1000 - 1:4000 IHC: 1:50 - 1:200 IF/ICC: 1:50 - 1:200
理论分子量	51kDa/55kDa/58kDa
实测分子量	58kDa
形式	Liquid
保存条件	Store at -20°C. Avoid freeze / thaw cycles. Buffer: PBS with 0.02% sodium azide,50% glycerol,pH7.3.
偶联物	Unconjugated
阳性对照	HepG2,SKOV3,293T,HeLa,Mouse liver,Mouse kidney,Rat liver,Rat kidney
细胞定位	Cytoplasm,Mitochondrion,Nucleus,cytosol
纯化	Affinity purification

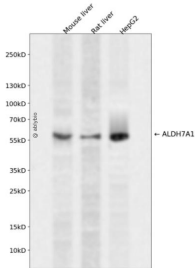
抗原信息

抗原信息	Recombinant fusion protein containing a sequence corresponding to amino acids 430-539 of human ALDH7A1 (NP_001173.2).
序列	APILYVFKFKNEEEVFAWNNNEVKQGLSSSIFTKDLGRIFRWLGPKGSDCGIVNVNIPTSGAEIGGAFGGEKHTGGGREGSGSDAWKQYMRRSTCTINYSKDLPLAQGIKFQ

靶点信息

研究背景	The protein encoded by this gene is a member of subfamily 7 in the aldehyde dehydrogenase gene family . These enzymes are thought to play a major role in the detoxification of aldehydes generated by alcohol metabolism and lipid peroxidation. This particular member has homology to a previously described protein from the green garden pea, the 26g pea turgor protein. It is also involved in lysine catabolism that is known to occur in the mitochondrial matrix. Recent reports show that this protein is found both in the cytosol and the mitochondria, and the two forms likely arise from the use of alternative translation initiation sites. An additional variant encoding a different isoform has also been found for this gene. Mutations in this gene are associated with pyridoxine-dependent epilepsy. Several related pseudogenes have also been identified.
基因ID	501
基因名	ALDH7A1
Swiss	P49419
别名	ALDH7A1;ATQ1;EPD;PDE

产品验证



Western blot analysis of ALDH7A1 expressed in Mouse liver,Rat liver,HepG2 using ALDH7A1 Rabbit pAb at 1:1000. Secondary antibody: HRP Goat Anti-Rabbit IgG (H+L) at 1:5000. Lysates/proteins: 30ug per lane. Blocking buffer: 5% non-fat dry milk in TBST. Detection: ECL Enhanced Kit. Exposure time: 120 S.

实验步骤

访问官网浏览详情: www.ablybio.cn