

# ADM Rabbit pAb

货号: **AYP13211**

## 产品信息

反应	Mouse
宿主	Rabbit
克隆性	Polyclonal
预测反应	<b>WB:</b> Homo sapiens
应用	<a href="#">WB</a>
推荐浓度	<b>WB:</b> 1:500 - 1:2000
理论分子量	20kDa
实测分子量	20kDa
形式	Liquid
保存条件	Store at -20°C. Avoid freeze / thaw cycles. Buffer: PBS with 0.01% thiomersal, 50% glycerol, pH7.3.
偶联物	Unconjugated
阳性对照	Mouse kidney
细胞定位	Secreted
纯化	Affinity purification

## 抗原信息

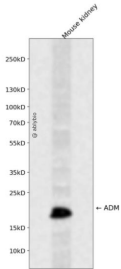
抗原信息	A synthetic peptide corresponding to a sequence within amino acids 50-150 of human ADM (NP_001115.1).
序列	SSYPTGLADV KAGPAQTLIRPQDMKGASRPEDSSPDAARIRVKRYRQSMNNFQGLRSFGCRFGTCTVQKLAHQIQFTDKDKDNVAPRSKISPQGYGRRR

## 靶点信息

研究背景	The protein encoded by this gene is a preprohormone which is cleaved to form two biologically active peptides, adrenomedullin and proadrenomedullin N-terminal 20 peptide. Adrenomedullin is a 52 aa peptide with several functions, including vasodilation, regulation of hormone secretion, promotion of angiogenesis, and antimicrobial activity. The antimicrobial activity is antibacterial, as the peptide has been shown to kill <i>E. coli</i> and <i>S. aureus</i> at low concentration.
基因ID	133

基因名	ADM
Swiss	P35318
别名	ADM;AM;PAMP

## 产品验证



Western blot analysis of ADM expressed in Mouse kidney using ADM Rabbit pAb at 1:1000. Secondary anti body: HRP Goat Anti-Rabbit IgG (H+L) at 1:5000. Lysates/proteins: 30ug per lane. Blocking buffer: 5% no n-fat dry milk in TBST. Detection: ECL Enhanced Kit. Exposure time: 120s.

## 实验步骤

访问官网浏览详情: [www.ablybio.cn](http://www.ablybio.cn)