

GPM6A Rabbit pAb

货号: AYP13200

产品信息

反应	Human,Mouse
宿主	Rabbit
克隆性	Polyclonal
预测反应	WB: mice
应用	WB IHC
推荐浓度	WB: 1:500 - 1:2000 IHC: 1:50 - 1:200
理论分子量	29kDa/30kDa/31kDa
实测分子量	31kDa
形式	Liquid
保存条件	Store at -20°C. Avoid freeze / thaw cycles. Buffer: PBS with 0.02% sodium azide,50% glycerol,pH7.3.
偶联物	Unconjugated
阳性对照	U-87MG
细胞定位	Cell membrane,Cell projection,Multi-pass membrane protein,axon,dendritic spine,filopodium
纯化	Affinity purification

抗原信息

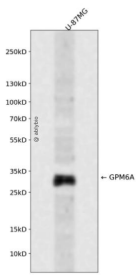
抗原信息	A synthetic peptide corresponding to a sequence within amino acids 1-100 of human GPM6A (NP_005268.1).
序列	MEENMEEGQTQKGCFECCIKCLGGIPYASLIATILLYAGVALFCGCGHEALSGTVNIIQLTYFEMARTAGDTLDVFTMIDIFKYVIYGIAAAFFVYGILLM

靶点信息

研究背景	Involved in neuronal differentiation, including differentiation and migration of neuronal stem cells. Plays a role in neuronal plasticity and is involved in neurite and filopodia outgrowth, filopodia motility and probably synapse formation. GPM6A-induced filopodia formation involves mitogen-activated protein kinase (MAP K and Src signaling pathways. May be involved in neuronal NGF-dependent Ca(2+ influx. May be involved in regulation of endocytosis and intracellular trafficking of G-protein-coupled receptors (GPCRs; enhances internalization and recycling of mu-type opioid receptor.
------	--

基因ID	2823
基因名	GPM6A
Swiss	P51674
别名	GPM6A;GPM6;M6A

产品验证



Western blot analysis of GPM6A expressed in U-87MG using GPM6A Rabbit pAb at 1:1000. Secondary anti body: HRP Goat Anti-Rabbit IgG (H+L) at 1:5000. Lysates/proteins: 30ug per lane. Blocking buffer: 5% no n-fat dry milk in TBST. Detection: ECL Enhanced Kit. Exposure time: 120s.

实验步骤

访问官网浏览详情: www.ablybio.cn