

CORO1A Rabbit pAb

货号: **AYP13193**

产品信息

反应	Human,Mouse,Rat
宿主	Rabbit
克隆性	Polyclonal
预测反应	WB: Mus musculus
应用	WB IHC
推荐浓度	WB: 1:500 - 1:2000 IHC: 1:50 - 1:200
理论分子量	51kDa
实测分子量	51kDa
形式	Liquid
保存条件	Store at -20°C. Avoid freeze / thaw cycles. Buffer: PBS with 0.02% sodium azide,50% glycerol,pH7.3.
偶联物	Unconjugated
阳性对照	HL-60,SW480,Mouse brain,Mouse lung,Rat lung
细胞定位	Cytoplasm,Cytoplasmic vesicle,cell cortex,cytoskeleton,phagosome membrane
纯化	Affinity purification

抗原信息

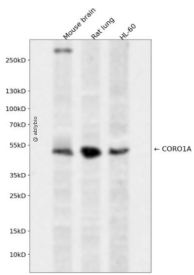
抗原信息	Recombinant fusion protein containing a sequence corresponding to amino acids 362-461 of human CORO1A (NP_001180262.1).
序列	DLYPPTAGPDPALTAEEWLGGRDAGPLLISLKDGYVPPKSRELRVNRLDGTGRRRAAPEASGTPSSDAVSRLEEEMRKLQATVQELQKRLDRLEETVQAK

靶点信息

研究背景	This gene encodes a member of the WD repeat protein family. WD repeats are minimally conserved regions of approximately 40 amino acids typically bracketed by gly-his and trp-aspartate (GH-WD), which may facilitate formation of heterotrimeric or multiprotein complexes. Members of this family are involved in a variety of cellular processes, including cell cycle progression, signal transduction, apoptosis, and gene regulation. Alternative splicing results in multiple transcript variants. A related pseudogene has been defined on chromosome 16.
------	---

基因ID	11151
基因名	CORO1A
Swiss	P31146
别名	CORO1A;CLABP;CLIPINA;HCORO1;IMD8;TACO;p57

产品验证



Western blot analysis of CORO1A expressed in Mouse brain,Rat lung,HL-60 using CORO1A Rabbit pAb at 1:1000. Secondary antibody: HRP Goat Anti-Rabbit IgG (H+L) at 1:5000. Lysates/proteins: 30ug per lane. Blocking buffer: 5% non-fat dry milk in TBST. Detection: ECL Enhanced Kit. Exposure time: 120s.

实验步骤

访问官网浏览详情: www.ablybio.cn