

CACNB4 Rabbit pAb

货号: **AYP13191**

产品信息

反应	Human,Mouse,Rat
宿主	Rabbit
克隆性	Polyclonal
预测反应	WB: Rattus norvegicus
应用	WB
推荐浓度	WB: 1:1000 - 1:2000
理论分子量	51kDa/54kDa/56kDa/58kDa
实测分子量	58kDa
形式	Liquid
保存条件	Store at -20°C. Avoid freeze / thaw cycles. Buffer: PBS with 0.02% sodium azide,50% glycerol,pH7.3.
偶联物	Unconjugated
阳性对照	Mouse brain,Rat brain
细胞定位	cytoplasmic side of plasma membrane,cytosol,glutamatergic synapse,nuclear speck,nucleolus,plasma membrane,presynapse,synapse
纯化	Affinity purification

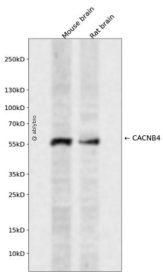
抗原信息

抗原信息	Recombinant fusion protein containing a sequence corresponding to amino acids 401-520 of human CACNB4 (NP_000717.2).
序列	ATHHTTSSTPMTPLLGRNLGSTALLSPYPTAISGLQSQMRHSHNHSTENSPHERRSLMTSDENYHNERARKSRNRLSSSSQHSRDHYPLVEEDYPDSYQDTYKPHRNRRGSPGGYSHDSRHRL

靶点信息

研究背景	This gene encodes a member of the beta subunit family of voltage-dependent calcium channel complex proteins. Calcium channels mediate the influx of calcium ions into the cell upon membrane polarization and consist of a complex of alpha-1, alpha-2/delta, beta, and gamma subunits in a 1:1:1:1 ratio. Various versions of each of these subunits exist, either expressed from similar genes or the result of alternative splicing. The protein encoded by this locus plays an important role in calcium channel function by modulating G protein inhibition, increasing peak calcium current, controlling the alpha-1 subunit membrane targeting and shifting the voltage dependence of activation and inactivation. Certain mutations in this gene have been associated with idiopathic generalized epilepsy (IGE) and juvenile myoclonic epilepsy (JME). Multiple transcript variants encoding different isoforms have been found for this gene.
基因ID	785
基因名	CACNB4
Swiss	O00305
别名	CACNB4;CAB4;CACNLB4;EA5;EIG9;EJM;EJM4;EJM6

产品验证



Western blot analysis of CACNB4 expressed in Mouse brain, Rat brain using CACNB4 Rabbit pAb at 1:1000. Secondary antibody: HRP Goat Anti-Rabbit IgG (H+L) at 1:5000. Lysates/proteins: 30ug per lane. Blocking buffer: 5% non-fat dry milk in TBST. Detection: ECL Enhanced Kit. Exposure time: 120s.

实验步骤

访问官网浏览详情: www.ablybio.cn