

# SEC31A Rabbit pAb

货号: **AYP13190**

## 产品信息

反应	Human,Mouse,Rat
宿主	Rabbit
克隆性	Polyclonal
预测反应	<b>IF:</b> Sus scrofa
应用	<a href="#">WB</a> <a href="#">IF/ICC</a>
推荐浓度	<b>WB:</b> 1:1000 - 1:2000 <b>IF/ICC:</b> 1:50 - 1:200
理论分子量	56kDa/105-134kDa
实测分子量	165kDa
形式	Liquid
保存条件	Store at -20°C. Avoid freeze / thaw cycles. Buffer: PBS with 0.01% thiomersal,50% glycerol,pH7.3.
偶联物	Unconjugated
阳性对照	Mouse liver,Rat liver
细胞定位	COPII-coated vesicle membrane,Cytoplasm,Cytoplasmic side,Cytoplasmic vesicle,Endoplasmic reticulum membrane,Peripheral membrane protein
纯化	Affinity purification

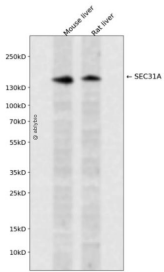
## 抗原信息

抗原信息	Recombinant fusion protein containing a sequence corresponding to amino acids 300-500 of human SEC3 1A (NP_055748.2).
序列	PTNTQWCFDIQWCPRNPAVLSAASFDGRISVYSIMGGSTDGLRQKQVDKLSSSFGNLDPFGTGQPLPPLQIPQQTAAQHSI VLPLKPPKWIRRPV GASFSFGGKLVTFENVRMP SHQGAEQQQQHVFISQVVTEKEFLSRSDQLQQAVQSQGFINYC QKKIDASQTEFEKNVWSFLKVNFEDDSRGKYLELLGYRKEDL

## 靶点信息

研究背景	The protein encoded by this gene shares similarity with the yeast Sec31 protein, and is a component of the outer layer of the coat protein complex II (COPII). The encoded protein is involved in vesicle budding from the endoplasmic reticulum (ER) and contains multiple WD repeats near the N-terminus and a proline-rich region in the C-terminal half. It associates with the protein encoded by the SEC13 homolog, nuclear pore and COPII coat complex component (SEC13), and is required for ER-Golgi transport. Monoubiquitylation of this protein by CUL3-KLHL12 was found to regulate the size of COPII coats to accommodate unusually shaped cargo. Alternative splicing results in multiple transcript variants encoding different isoforms.
基因ID	22872
基因名	SEC31A
Swiss	O94979
别名	SEC31A;ABP125;ABP130;HSPC275;HSPC334;SEC31L1

## 产品验证



Western blot analysis of SEC31A expressed in Mouse liver,Rat liver using SEC31A Rabbit pAb at 1:1000. Secondary antibody: HRP Goat Anti-Rabbit IgG (H+L) at 1:5000. Lysates/proteins: 30ug per lane. Blocking buffer: 5% non-fat dry milk in TBST. Detection: ECL Enhanced Kit. Exposure time: 120s.

## 实验步骤

访问官网浏览详情: [www.ablybio.cn](http://www.ablybio.cn)