

BTG2 Rabbit pAb

货号: **AYP13181**

产品信息

反应	Human,Mouse,Rat
宿主	Rabbit
克隆性	Polyclonal
预测反应	WB: Rattus norvegicus
应用	WB
推荐浓度	WB: 1:500 - 1:2000
理论分子量	17kDa
实测分子量	17kDa
形式	Liquid
保存条件	Store at -20°C. Avoid freeze / thaw cycles. Buffer: PBS with 0.02% sodium azide,50% glycerol,pH7.3.
偶联物	Unconjugated
阳性对照	HepG2,LO2,HT-1080,BT-474
细胞定位	cytoplasm,cytosol,extracellular exosome,nucleus
纯化	Affinity purification

抗原信息

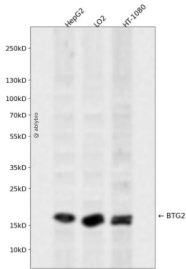
抗原信息	Recombinant fusion protein containing a sequence corresponding to amino acids 1-158 of human BTG2 (NP_006754.1).
序列	MSHGKGTDM LPEIAAAV GFLSSLLR TRGCVSE QRLKVFSGALQEALTEHYKHHWFPEKPSKGSYRCIRINHKMDPIISRV ASQIGLSQPQLHQLLPSELTLWVDPYEVSYRIGEDGSICVLYEEAPLAASCGLLTCKNQVLLGRSSPSKKNYVMAVSS

靶点信息

研究背景	The protein encoded by this gene is a member of the BTG/Tob family. This family has structurally related proteins that appear to have antiproliferative properties. This encoded protein is involved in the regulation of the G1/S transition of the cell cycle.
基因ID	7832

基因名	BTG2
Swiss	P78543
别名	BTG2;APRO1;PC3;TIS21

产品验证



Western blot analysis of BTG2 expressed in HepG2, LO2, HT-1080 using BTG2 Rabbit pAb at 1:1000. Secondary antibody: HRP Goat Anti-Rabbit IgG (H+L) at 1:5000. Lysates/proteins: 30ug per lane. Blocking buffer: 5% non-fat dry milk in TBST. Detection: ECL Enhanced Kit. Exposure time: 120s.

实验步骤

访问官网浏览详情: www.ablybio.cn