

GLDC Rabbit pAb

货号: AYP13176

产品信息

反应	Human,Mouse,Rat
宿主	Rabbit
克隆性	Polyclonal
预测反应	WB: Mus musculus
应用	WB IHC IF/ICC IP
推荐浓度	WB: 1:500 - 1:2000 IHC: 1:50 - 1:100 IF/ICC: 1:50 - 1:100 IP: 1:500 - 1:1000
理论分子量	112kDa
实测分子量	113kDa
形式	Liquid
保存条件	Store at -20°C. Avoid freeze / thaw cycles. Buffer: PBS with 0.02% sodium azide,50% glycerol,pH7.3.
偶联物	Unconjugated
阳性对照	HepG2,DU145
细胞定位	Mitochondrion
纯化	Affinity purification

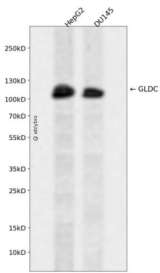
抗原信息

抗原信息	Recombinant fusion protein containing a sequence corresponding to amino acids 36-290 of human GLDC (NP_000161.2).
序列	DSSSGGGDSAAAGASRLLERLLPRHDDFARRHIGPGDKDQREMLQTLGLASIDELIEKTVPANIRLKRPLKMEDPVCENEIL ATLHAISSKNQIWRSYIGMGYYNCSVPQTILRNLLNSGWITQYTPYQPEVSQGRLESLLNYQTMVCDITGLDMANASLLD EGTAAAEALQLCYRHNKRRKFLVDPRCHPQTIAVVQTRAKYTGVLTELKLPCEMDFSGKDVSGLVLFQYPDTEGKVEDFTEL VERAHQSGSLA

靶点信息

研究背景	Degradation of glycine is brought about by the glycine cleavage system, which is composed of four mitochondrial protein components: P protein (a pyridoxal phosphate-dependent glycine decarboxylase), H protein (a lipoic acid-containing protein), T protein (a tetrahydrofolate-requiring enzyme), and L protein (a lipoamide dehydrogenase). The protein encoded by this gene is the P protein, which binds to glycine and enables the methylamine group from glycine to be transferred to the T protein. Defects in this gene are a cause of nonketotic hyperglycinemia (NKH).
基因ID	2731
基因名	GLDC
Swiss	P23378
别名	GLDC;GCE;GCSP;HYGN1

产品验证



Western blot analysis of GLDC expressed in HepG2,DU145 using GLDC Rabbit pAb at 1:1000. Secondary antibody: HRP Goat Anti-Rabbit IgG (H+L) at 1:5000. Lysates/proteins: 30ug per lane. Blocking buffer: 5% non-fat dry milk in TBST. Detection: ECL Enhanced Kit. Exposure time: 120s.

实验步骤

访问官网浏览详情: www.ablybio.cn