

RNASE2 Rabbit pAb

货号: **AYP13174**

产品信息

反应	Human,Mouse
宿主	Rabbit
克隆性	Polyclonal
预测反应	WB: Homo sapiens
应用	WB IF/ICC
推荐浓度	WB: 1:500 - 1:2000 IF/ICC: 1:50 - 1:200
理论分子量	18kDa
实测分子量	26kDa
形式	Liquid
保存条件	Store at -20°C. Avoid freeze / thaw cycles. Buffer: PBS with 0.02% sodium azide,50% glycerol,pH7.3.
偶联物	Unconjugated
阳性对照	K-562,HL-60,Mouse liver
细胞定位	Cytoplasmic granule,Lysosome
纯化	Affinity purification

抗原信息

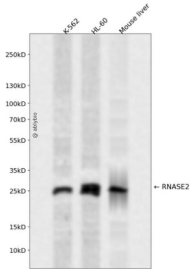
抗原信息	Recombinant fusion protein containing a sequence corresponding to amino acids 28-161 of human RNASE2 (NP_002925.1).
序列	KPPQFTWAQWFETQHINMTSQQCTNAMQVINNYQRRCKNQNTFLTTTFANVVNVCGNPNMTCPSNKTRKNCHHSGSQVPLIHCLTTPSPQNISNCRYAQTANMFYIVACDNRDQRRDPPQYPVVPVHLDRII

靶点信息

研究背景	The protein encoded by this gene is a non-secretory ribonuclease that belongs to the pancreatic ribonuclease family, a subset of the ribonuclease A superfamily. The protein antimicrobial activity against viruses .
基因ID	6036

基因名	RNASE2
Swiss	P10153
别名	RNASE2;EDN;RAF3;RNS2

产品验证



Western blot analysis of RNASE2 expressed in K-562,HL-60,Mouse liver using RNASE2 Rabbit pAb at 1:1000. Secondary antibody: HRP Goat Anti-Rabbit IgG (H+L) at 1:5000. Lysates/proteins: 30ug per lane. Blocking buffer: 5% non-fat dry milk in TBST. Detection: ECL Enhanced Kit. Exposure time: 120s.

实验步骤

访问官网浏览详情: www.ablybio.cn