

SLC12A2 Rabbit pAb

货号: **AYP13148**

产品信息

反应	Human,Mouse,Rat
宿主	Rabbit
克隆性	Polyclonal
预测反应	WB: Mus musculus,Sus scrofa
应用	WB IHC
推荐浓度	WB: 1:100 - 1:500 IHC: 1:50 - 1:200
理论分子量	129kDa/131kDa
实测分子量	160-200KDa
形式	Liquid
保存条件	Store at -20°C. Avoid freeze / thaw cycles. Buffer: PBS with 0.05% proclin300,50% glycerol,pH7.3.
偶联物	Unconjugated
阳性对照	Mouse brain,Rat brain
细胞定位	Membrane,Multi-pass membrane protein
纯化	Affinity purification

抗原信息

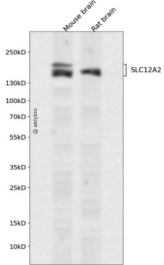
抗原信息	Recombinant fusion protein containing a sequence corresponding to amino acids 201-280 of human SLC12A2 (NP_001037.1).
序列	YDTHNTYYLRTFGHNTMDAVPRIDHYRHTAAQLGEKLLRPSLAELHDELEKEPFEDGFANGEESTPTRDAVVTYTAESK

靶点信息

研究背景	The protein encoded by this gene mediates sodium and chloride transport and reabsorption. The encoded protein is a membrane protein and is important in maintaining proper ionic balance and cell volume. This protein is phosphorylated in response to DNA damage. Three transcript variants encoding two different isoforms have been found for this gene.
基因ID	6558

基因名	SLC12A2
Swiss	P55011
别名	SLC12A2;BSC;BSC2;NKCC1;PPP1R141

产品验证



Western blot analysis of SLC12A2 expressed in Mouse brain,Rat brain using SLC12A2 Rabbit pAb at 1:1000. Secondary antibody: HRP Goat Anti-Rabbit IgG (H+L) at 1:5000. Lysates/proteins: 30ug per lane. Blocking buffer: 5% non-fat dry milk in TBST. Detection: ECL Enhanced Kit. Exposure time: 120s.

实验步骤

访问官网浏览详情: www.ablybio.cn