

RASSF1 Rabbit pAb

货号: **AYP13145**

产品信息

反应	Human,Mouse
宿主	Rabbit
克隆性	Polyclonal
预测反应	WB: mouse
应用	WB
推荐浓度	WB: 1:500 - 1:2000
理论分子量	8kDa/9kDa/16kDa/21kDa/31kDa/38kDa/39kDa
实测分子量	39kDa
形式	Liquid
保存条件	Store at -20°C. Avoid freeze / thaw cycles. Buffer: PBS with 0.02% sodium azide,50% glycerol,pH7.3.
偶联物	Unconjugated
阳性对照	HeLa,HepG2,293T,SW480
细胞定位	Cytoplasm,Nucleus,Nucleus,centrosome,cytoskeleton,microtubule organizing center,spindle,spindle pole
纯化	Affinity purification

抗原信息

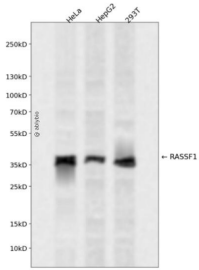
抗原信息	Recombinant fusion protein containing a sequence corresponding to amino acids 101-340 of human RASSF1 (NP_009113.3).
序列	CCGPRDLGWEP AVERDTNVDEPVEWETPDLSQAEIEQKIKEYNAQINSNLFMSLNKDGSYTGFIVQLKLVKLRPVSVPSKK PPSLQDARRGPGRGTSVRRRTSFYLPKDAVKHLHVLRSRTRAREVIEALLRKFLVDDPRKFALFERAERHGQVYLRKLLDD EQPLRLRLLAGPSDKALSFVLKENDSGEVNWDFAFSMPELHNFLRILQREEEHRLRQILQKYSYCRQKIQEALHACPLG

靶点信息

研究背景	This gene encodes a protein similar to the RAS effector proteins. Loss or altered expression of this gene has been associated with the pathogenesis of a variety of cancers, which suggests the tumor suppressor function of this gene. The inactivation of this gene was found to be correlated with the hypermethylation of its CpG-island promoter region. The encoded protein was found to interact with DNA repair protein XPA. The protein was also shown to inhibit the accumulation of cyclin D1, and thus induce cell cycle arrest. Several alternatively spliced transcript variants of this gene encoding distinct isoforms have been reported.
------	--

基因ID	11186
基因名	RASSF1
Swiss	Q9NS23
别名	RASSF1;123F2;NORE2A;RASSF1A;RDA32;REH3P21

产品验证



Western blot analysis of RASSF1 expressed in HeLa, HepG2, 293T using RASSF1 Rabbit pAb at 1:1000. Secondary antibody: HRP Goat Anti-Rabbit IgG (H+L) at 1:5000. Lysates/proteins: 30ug per lane. Blocking buffer: 5% non-fat dry milk in TBST. Detection: ECL Enhanced Kit. Exposure time: 120s.

实验步骤

访问官网浏览详情: www.ablybio.cn