

DUSP3 Rabbit pAb

货号: **AYP13143**

产品信息

| | |
|-------|--|
| 反应 | Mouse,Rat |
| 宿主 | Rabbit |
| 克隆性 | Polyclonal |
| 预测反应 | WB: Mus musculus,Homo sapiens |
| 应用 | WB |
| 推荐浓度 | WB: 1:500 - 1:1000 |
| 理论分子量 | 16kDa/20kDa |
| 实测分子量 | 20kDa |
| 形式 | Liquid |
| 保存条件 | Store at -20°C. Avoid freeze / thaw cycles. Buffer: PBS with 0.01% thiomersal,50% glycerol,pH7.3. |
| 偶联物 | Unconjugated |
| 阳性对照 | Mouse stomach,Rat kidney |
| 细胞定位 | Nucleus |
| 纯化 | Affinity purification |

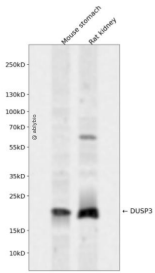
抗原信息

| | |
|------|---|
| 抗原信息 | Recombinant fusion protein containing a sequence corresponding to amino acids 1-185 of human DUSP3 (NP_004081.1). |
| 序列 | MSGSFELSVQDLNDLLSDGSGCYSLSPQCNEVTPRIYVGNASVAQDIPKLQKLGITHVLNAAEGRSFMHVNTNANFYKDSGITYLGIKANDTQEFNLSAYFERAADFIDQALAQKNGRVLVHCREGYSRSPTLVIAYLMMRQKMDVKSALSIVRQNREIGPNDGFLAQLCQLNDRLAKEGKLP |

靶点信息

| | |
|-------|--|
| 研究背景 | The protein encoded by this gene is a member of the dual specificity protein phosphatase subfamily. These phosphatases inactivate their target kinases by dephosphorylating both the phosphoserine/threonine and phosphotyrosine residues. They negatively regulate members of the mitogen-activated protein (MAP) kinase superfamily (MAPK/ERK, SAPK/JNK, p38), which are associated with cellular proliferation and differentiation. Different members of the family of dual specificity phosphatases show distinct substrate specificities for various MAP kinases, different tissue distribution and subcellular localization, and different modes of inducibility of their expression by extracellular stimuli. This gene maps in a region that contains the BRCA1 locus which confers susceptibility to breast and ovarian cancer. Although DUSP3 is expressed in both breast and ovarian tissues, mutation screening in breast cancer pedigrees and in sporadic tumors was negative, leading to the conclusion that this gene is not BRCA1. |
| 基因ID | 1845 |
| 基因名 | DUSP3 |
| Swiss | P51452 |
| 别名 | DUSP3;VHR |

产品验证



Western blot analysis of DUSP3 expressed in Mouse stomach, Rat kidney using DUSP3 Rabbit pAb at 1:1000. Secondary antibody: HRP Goat Anti-Rabbit IgG (H+L) at 1:5000. Lysates/proteins: 30ug per lane. Blocking buffer: 5% non-fat dry milk in TBST. Detection: ECL Enhanced Kit. Exposure time: 120s.

实验步骤

访问官网浏览详情: www.ablybio.cn