

Pin1 Rabbit pAb

货号: **AYP13121**

产品信息

反应	Human
宿主	Rabbit
克隆性	Polyclonal
预测反应	WB: Homo sapiens
应用	WB IF/ICC
推荐浓度	WB: 1:500 - 1:2000 IF/ICC: 1:50 - 1:200
理论分子量	18kDa
实测分子量	17kDa
形式	Liquid
保存条件	Store at -20°C. Avoid freeze / thaw cycles. Buffer: PBS with 0.02% sodium azide,50% glycerol,pH7.3.
偶联物	Unconjugated
阳性对照	293T,Jurkat
细胞定位	Cytoplasm,Nucleus,Nucleus speckle
纯化	Affinity purification

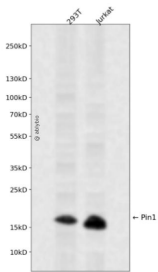
抗原信息

抗原信息	Recombinant fusion protein containing a sequence corresponding to amino acids 1-163 of human Pin1 (N P_006212.1).
序列	MADEEKLPPGW EK RMSRSSGRVYYFNHITNASQWERPSGNSSSGGKNGQGEPARVRCSHLLVKHSQSRPSSWRQEK ITRTKEEAELENGYIQKIKSGEEDFESLASQFSDCSSAKARGDLGAFSRGQM QKPFEDASFALRTGEMSGPVFTDSGIHIL RTE

靶点信息

研究背景	Peptidyl-prolyl cis/trans isomerases (PPIases) catalyze the cis/trans isomerization of peptidyl-prolyl peptide bonds. This gene encodes one of the PPIases, which specifically binds to phosphorylated ser/thr-pro motifs to catalytically regulate the post-phosphorylation conformation of its substrates. The conformational regulation catalyzed by this PPIase has a profound impact on key proteins involved in the regulation of cell growth, genotoxic and other stress responses, the immune response, induction and maintenance of pluripotency, germ cell development, neuronal differentiation, and survival. This enzyme also plays a key role in the pathogenesis of Alzheimer's disease and many cancers. Multiple alternatively spliced transcript variants have been found for this gene.
基因ID	5300
基因名	PIN1
Swiss	Q13526
别名	PIN1;DOD;UBL5

产品验证



Western blot analysis of Pin1 expressed in 293T, Jurkat using Pin1 Rabbit pAb at 1:1000. Secondary antibody: HRP Goat Anti-Rabbit IgG (H+L) at 1:5000. Lysates/proteins: 30ug per lane. Blocking buffer: 5% non-fat dry milk in TBST. Detection: ECL Enhanced Kit. Exposure time: 120s.

实验步骤

访问官网浏览详情: www.ablybio.cn