

# RPL30 Rabbit pAb

货号: **AYP13120**

## 产品信息

|       |  |
|-------|--|
| 反应    | Human,Mouse,Rat  |
| 宿主    | Rabbit   |
| 克隆性   | Polyclonal   |
| 预测反应  | <b>WB:</b> Homo sapiens  |
| 应用    | <a href="#">WB</a> <a href="#">IHC</a> <a href="#">IF/ICC</a>  |
| 推荐浓度  | <b>WB:</b> 1:500 - 1:2000<br><b>IHC:</b> 1:50 - 1:100<br><b>IF/ICC:</b> 1:50 - 1:100                 |
| 理论分子量 | 12kDa  |
| 实测分子量 | 13kDa  |
| 形式    | Liquid   |
| 保存条件  | Store at -20°C. Avoid freeze / thaw cycles.<br>Buffer: PBS with 0.01% thiomersal,50% glycerol,pH7.3. |
| 偶联物   | Unconjugated   |
| 阳性对照  | HeLa,MCF7,HepG2,A-549,Mouse brain,Mouse heart,Mouse kidney,Rat liver                                 |
| 细胞定位  | cytoplasm,cytosol,cytosolic ribosome,extracellular exosome,nucleus,postsynaptic density              |
| 纯化    | Affinity purification  |

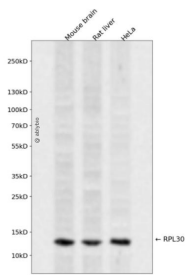
## 抗原信息

|      |   |
|------|---|
| 抗原信息 | Recombinant fusion protein containing a sequence corresponding to amino acids 1-115 of human RPL30 (NP_000980.1).       |
| 序列   | MVAAKKTKKSLESINSRLQLVMKSGKYVLGYKQTLKMIRQGKAKLVILANNCPALRKSEIEYYAMLAKTGVVHHYSGNNIELG<br>TACGKYRVCTLAIIDPGDSDIIRSMPEQTGEK |

## 靶点信息

|       |  |
|-------|--|
| 研究背景  | Ribosomes, the organelles that catalyze protein synthesis, consist of a small 40S subunit and a large 60S subunit. Together these subunits are composed of 4 RNA species and approximately 80 structurally distinct proteins. This gene encodes a ribosomal protein that is a component of the 60S subunit. The protein belongs to the L30E family of ribosomal proteins. It is located in the cytoplasm. This gene is co-transcribed with the U72 small nucleolar RNA gene, which is located in its fourth intron. As is typical for genes encoding ribosomal proteins, there are multiple processed pseudogenes of this gene dispersed through the genome. |
| 基因ID  | 6156   |
| 基因名   | RPL30  |
| Swiss | P62888   |
| 别名    | RPL30;L30  |

## 产品验证



Western blot analysis of RPL30 expressed in Mouse brain,Rat liver,HeLa using RPL30 Rabbit pAb at 1:1000. Secondary antibody: HRP Goat Anti-Rabbit IgG (H+L) at 1:5000. Lysates/proteins: 30ug per lane. Blocking buffer: 5% non-fat dry milk in TBST. Detection: ECL Enhanced Kit. Exposure time: 120s.

## 实验步骤

访问官网浏览详情: [www.ablybio.cn](http://www.ablybio.cn)