

# SULF1 Rabbit pAb

货号: **AYP13118**

## 产品信息

反应	Human,Rat
宿主	Rabbit
克隆性	Polyclonal
预测反应	<b>WB:</b> Homo sapiens, Rattus norvegicus
应用	<a href="#">WB</a>
推荐浓度	<b>WB:</b> 1:500 - 1:2000
理论分子量	101kDa
实测分子量	101KDa
形式	Liquid
保存条件	Store at -20°C. Avoid freeze / thaw cycles. Buffer: PBS with 0.01% thiomersal,50% glycerol,pH7.3.
偶联物	Unconjugated
阳性对照	HepG2,MCF7,PC-3,U-251MG,Rat testis
细胞定位	Cell surface,Endoplasmic reticulum,Golgi apparatus,Golgi stack
纯化	Affinity purification

## 抗原信息

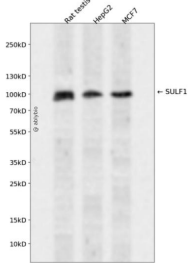
抗原信息	Recombinant fusion protein containing a sequence corresponding to amino acids 480-610 of human SULF 1 (NP_001121676.1).
序列	SDLLTVRQSTRNLYARGFHDKDKECSCRESGYRASRSQRKSQRQFLRNQGTPKYKPRFVHTRQTRSLSVFEFEGEYDINLE EEEEELQVLQPRNIAKRHDEGHKGPRDLQASSGGNRGRMLADSSNAVGPPPT

## 靶点信息

研究背景	This gene encodes an extracellular heparan sulfate endosulfatase. The encoded enzyme selectively removes 6-O-sulfate groups from heparan sulfate chains of heparan sulfate proteoglycans (HSPGs). The enzyme is secreted through the Golgi and is subsequently localized to the cell surface. The expression of this gene may be down-regulated in several types of cancer, including hepatocellular (HCC), ovarian and breast cancers. Alternative splicing results in multiple transcript variants.
基因ID	23213

基因名	SULF1
Swiss	Q8IWU6
别名	SULF1;SULF-1

## 产品验证



Western blot analysis of SULF1 expressed in Rat testis,HepG2,MCF7 using SULF1 Rabbit pAb at 1:1000. Secondary antibody: HRP Goat Anti-Rabbit IgG (H+L) at 1:5000. Lysates/proteins: 30ug per lane. Blocking buffer: 5% non-fat dry milk in TBST. Detection: ECL Enhanced Kit. Exposure time: 120s.

## 实验步骤

访问官网浏览详情: [www.ablybio.cn](http://www.ablybio.cn)