

PLP1 Rabbit pAb

货号: **AYP13112**

产品信息

反应	Human,Mouse
宿主	Rabbit
克隆性	Polyclonal
预测反应	WB: Mus musculus
应用	WB
推荐浓度	WB: 1:500 - 1:2000
理论分子量	26kDa/30kDa
实测分子量	34kDa
形式	Liquid
保存条件	Store at -20°C. Avoid freeze / thaw cycles. Buffer: PBS with 0.01% thiomersal,50% glycerol,pH7.3.
偶联物	Unconjugated
阳性对照	HeLa,Mouse heart,Mouse kidney,Mouse liver
细胞定位	Cell membrane,Multi-pass membrane protein,Myelin membrane
纯化	Affinity purification

抗原信息

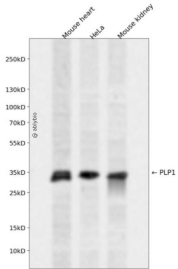
抗原信息	Recombinant fusion protein containing a sequence corresponding to amino acids 145-210 of human PLP1 (NP_955772.1).
序列	TW TTCQSI AFPSKTSASIGSLCADARMYGVL PWNAFP GKVCGSNLLSICKTAEFQMTFHLFIAAFV

靶点信息

研究背景	This gene encodes a transmembrane proteolipid protein that is the predominant component of myelin. The encoded protein may play a role in the compaction, stabilization, and maintenance of myelin sheaths, as well as in oligodendrocyte development and axonal survival. Mutations in this gene cause Pelizaeus-Merzbacher disease and spastic paraplegia type 2. Alternatively splicing results in multiple transcript variants, including the DM20 splice variant.
基因ID	5354

基因名	PLP1
Swiss	P60201
别名	PLP1;GPM6C;HLD1;MMPL;PLP;PLP/DM20;PMD;SPG2

产品验证



Western blot analysis of PLP1 expressed in Mouse heart, HeLa, Mouse kidney using PLP1 Rabbit pAb at 1:1000. Secondary antibody: HRP Goat Anti-Rabbit IgG (H+L) at 1:5000. Lysates/proteins: 30ug per lane. Blocking buffer: 5% non-fat dry milk in TBST. Detection: ECL Enhanced Kit. Exposure time: 120s.

实验步骤

访问官网浏览详情: www.ablybio.cn