

CTRB1 Rabbit pAb

货号: **AYP13104**

产品信息

反应	Human,Mouse,Rat
宿主	Rabbit
克隆性	Polyclonal
预测反应	WB: Mus musculus
应用	WB IHC IF/ICC
推荐浓度	WB: 1:500 - 1:2000 IHC: 1:50 - 1:100 IF/ICC: 1:50 - 1:100
理论分子量	27kDa
实测分子量	28kDa
形式	Liquid
保存条件	Store at -20°C. Avoid freeze / thaw cycles. Buffer: PBS with 0.01% thiomersal,50% glycerol,pH7.3.
偶联物	Unconjugated
阳性对照	Mouse spleen,Mouse stomach
细胞定位	Secreted,extracellular space
纯化	Affinity purification

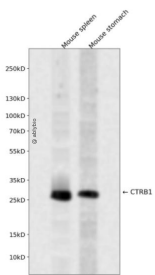
抗原信息

抗原信息	Recombinant fusion protein containing a sequence corresponding to amino acids 79-263 of human CTRB1 (NP_001897.4).
序列	RTSDVVVAGEFDQGSDEENIQVLKIAKVFKNPKFSILTVNNDITLLKLATPARFSQTVSAVCLPSADDDFPAGTLCATTGW GKTKYNANKTPDKLQQAALPLLSNAECKKSWGRRITDVMICAGASGVSSCMGDSGGPLVCQKDGAWTLVGIVSWGSD TCSTSSPGVYARVTKLIPWVQKILAAAN

靶点信息

研究背景	This gene encodes a member of the serine protease family of enzymes and forms a principal precursor of the pancreatic proteolytic enzymes. The encoded preproprotein is synthesized in the acinar cells of the pancreas and secreted into the small intestine where it undergoes proteolytic activation to generate a functional enzyme. This gene is located adjacent to a related chymotrypsinogen gene. This gene encodes distinct isoforms, some or all of which may undergo similar processing to generate the mature protein.
基因ID	1504
基因名	CTRB1
Swiss	P17538
别名	CTRB1;CTRB

产品验证



Western blot analysis of CTRB1 expressed in Mouse spleen, Mouse stomach using CTRB1 Rabbit pAb at 1:1000. Secondary antibody: HRP Goat Anti-Rabbit IgG (H+L) at 1:5000. Lysates/proteins: 30ug per lane. Blocking buffer: 5% non-fat dry milk in TBST. Detection: ECL Enhanced Kit. Exposure time: 120s.

实验步骤

访问官网浏览详情: www.ablybio.cn