

# RPL6 Rabbit pAb

货号: **AYP13103**

## 产品信息

反应	Human,Mouse,Rat
宿主	Rabbit
克隆性	Polyclonal
预测反应	<b>WB:</b> Mus musculus
应用	<a href="#">WB</a> <a href="#">IF/ICC</a>
推荐浓度	<b>WB:</b> 1:500 - 1:2000 <b>IF/ICC:</b> 1:50 - 1:200
理论分子量	32kDa
实测分子量	38kDa
形式	Liquid
保存条件	Store at -20°C. Avoid freeze / thaw cycles. Buffer: PBS with 0.01% thiomersal,50% glycerol,pH7.3.
偶联物	Unconjugated
阳性对照	U-251MG,LO2,A549,HeLa,mouse liver,rat lung
细胞定位	cytoplasm,cytoplasmic ribonucleoprotein granule,cytosol,cytosolic ribosome,nucleus,postsynaptic density ,rough endoplasmic reticulum
纯化	Affinity purification

## 抗原信息

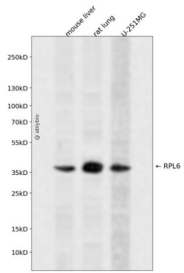
抗原信息	Recombinant fusion protein containing a sequence corresponding to amino acids 188-288 of human RPL6 (NP_000961.2).
序列	RTHQKFVIATSTKIDISNVKIPKHLTDAYFKKKKLRKPRHQEGEIFDTEKEKEYEITEQRKIDQKAVDSQILPKIKAIPQLQGYLR SVFALTNGIYPHKLVF

## 靶点信息

研究背景	This gene encodes a protein component of the 60S ribosomal subunit. This protein can bind specifically to domain C of the tax-responsive enhancer element of human T-cell leukemia virus type 1, and may participate in tax-mediated transactivation of transcription. As is typical for genes encoding ribosomal proteins, there are multiple processed pseudogenes of this gene dispersed throughout the genome. Alternative splicing results in multiple transcript variants.
------	--

基因ID	6128
基因名	RPL6
Swiss	Q02878
别名	RPL6;L6;SHUJUN-2;TAXREB107;TXREB1

## 产品验证



Western blot analysis of RPL6 expressed in mouse liver, rat lung, U-251MG using RPL6 Rabbit pAb at 1:1000. Secondary antibody: HRP Goat Anti-Rabbit IgG (H+L) at 1:5000. Lysates/proteins: 30ug per lane. Blocking buffer: 5% non-fat dry milk in TBST. Detection: ECL Enhanced Kit. Exposure time: 120s.

## 实验步骤

访问官网浏览详情: [www.ablybio.cn](http://www.ablybio.cn)