

Phospho-Ezrin-T567 Rabbit pAb

货号: **AYP13091**

产品信息

反应	Human,Mouse,Rat
宿主	Rabbit
克隆性	Polyclonal
预测反应	WB: Mus musculus
应用	WB
推荐浓度	WB: 1:500 - 1:2000
理论分子量	69kDa
实测分子量	80kDa
形式	Liquid
保存条件	Store at -20°C. Avoid freeze / thaw cycles. Buffer: PBS with 0.02% sodium azide,50% glycerol,pH7.3.
偶联物	Unconjugated
阳性对照	MDA
细胞定位	Apical cell membrane,Cell projection,Cytoplasm,Cytoplasmic side,Peripheral membrane protein,cell cortex,cytoskeleton,microvillus membrane,ruffle membrane
纯化	Affinity purification

抗原信息

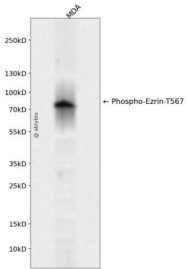
抗原信息	A phospho specific peptide corresponding to residues surrounding T567 of human Ezrin
序列	

靶点信息

研究背景	The cytoplasmic peripheral membrane protein encoded by this gene functions as a protein-tyrosine kinase substrate in microvilli. As a member of the ERM protein family, this protein serves as an intermediate between the plasma membrane and the actin cytoskeleton. This protein plays a key role in cell surface structure adhesion, migration and organization, and it has been implicated in various human cancers. A pseudogene located on chromosome 3 has been identified for this gene. Alternatively spliced variants have also been described for this gene.
基因ID	7430

基因名	EZR
Swiss	P15311
别名	CVIL;CVL;HEL-S-105;VIL2;EZR;Ezrin;ezrin

产品验证



Western blot analysis of Phospho-Ezrin-T567 expressed in MDA using Phospho-Ezrin-T567 Rabbit pAb at 1:1000. Secondary antibody: HRP Goat Anti-Rabbit IgG (H+L) at 1:5000. Lysates/proteins: 30ug per lane. Blocking buffer: 5% non-fat dry milk in TBST. Detection: ECL Enhanced Kit. Exposure time: 120s.

实验步骤

访问官网浏览详情: www.ablybio.cn