

Phospho-Stathmin 1-S25 Rabbit pAb

货号: **AYP13089**

产品信息

反应	Human,Mouse,Rat
宿主	Rabbit
克隆性	Polyclonal
预测反应	WB: Homo sapiens
应用	WB IHC
推荐浓度	WB: 1:100 - 1:500 IHC: 1:50 - 1:100
理论分子量	17kDa/19kDa
实测分子量	17KDa
形式	Liquid
保存条件	Store at -20°C. Avoid freeze / thaw cycles. Buffer: PBS with 0.01% thiomersal,50% glycerol,pH7.3.
偶联物	Unconjugated
阳性对照	Jurkat,C6
细胞定位	Cytoplasm,cytoskeleton
纯化	Affinity purification

抗原信息

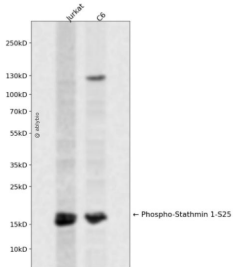
抗原信息	A synthetic phosphorylated peptide around S25 of human Stathmin 1 (NP_005554.1).
序列	ILSPR

靶点信息

研究背景	This gene belongs to the stathmin family of genes. It encodes a ubiquitous cytosolic phosphoprotein proposed to function as an intracellular relay integrating regulatory signals of the cellular environment. The encoded protein is involved in the regulation of the microtubule filament system by destabilizing microtubules. It prevents assembly and promotes disassembly of microtubules. Multiple transcript variants encoding different isoforms have been found for this gene.
基因ID	3925

基因名	STMN1
Swiss	P16949
别名	STMN1;C1orf215;LAP18;Lag;OP18;PP17;PP19;PR22;SMN;stathmin

产品验证



Western blot analysis of Phospho-Stathmin 1-S25 expressed in Jurkat,C6 using Phospho-Stathmin 1-S25 Rabbit pAb at 1:1000. Secondary antibody: HRP Goat Anti-Rabbit IgG (H+L) at 1:5000. Lysate s/proteins: 30ug per lane. Blocking buffer: 5% non-fat dry milk in TBST. Detection: ECL Enhanced K it. Exposure time: 120s.

实验步骤

访问官网浏览详情: www.ablybio.cn