

CRKL Rabbit pAb

货号: **AYP13081**

产品信息

反应	Human,Mouse
宿主	Rabbit
克隆性	Polyclonal
预测反应	WB: Homo sapiens
应用	WB IF/ICC
推荐浓度	WB: 1:500 - 1:2000 IF/ICC: 1:50 - 1:100
理论分子量	33kDa
实测分子量	34kDa
形式	Liquid
保存条件	Store at -20°C. Avoid freeze / thaw cycles. Buffer: PBS with 0.02% sodium azide,50% glycerol,pH7.3.
偶联物	Unconjugated
阳性对照	MCF7,HeLa,Raji,Mouse brain,Mouse thymus,Mouse liver
细胞定位	cytosol,extrinsic component of postsynaptic membrane,neuromuscular junction,nucleoplasm
纯化	Affinity purification

抗原信息

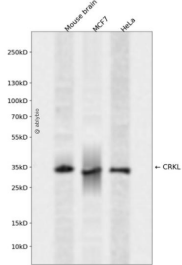
抗原信息	A synthetic peptide corresponding to a sequence within amino acids 250-350 of human CRKL (P46109).
序列	AYDKTALALEVGDIVKVTRMNINGQWEGEVNGRKGLFPFTHVKIFDPQNPENE

靶点信息

研究背景	This gene encodes a protein kinase containing SH2 and SH3 (src homology) domains which has been shown to activate the RAS and JUN kinase signaling pathways and transform fibroblasts in a RAS-dependent fashion. It is a substrate of the BCR-ABL tyrosine kinase, plays a role in fibroblast transformation by BCR-ABL, and may be oncogenic.
基因ID	1399

基因名	CRKL
Swiss	P46109
别名	CRKL

产品验证



Western blot analysis of CRKL expressed in Mouse brain, MCF7, HeLa using CRKL Rabbit pAb at 1:1000. Secondary antibody: HRP Goat Anti-Rabbit IgG (H+L) at 1:5000. Lysates/proteins: 30ug per lane. Blocking buffer: 5% non-fat dry milk in TBST. Detection: ECL Enhanced Kit. Exposure time: 120s.

实验步骤

访问官网浏览详情: www.ablybio.cn