

MARVELD2 Rabbit pAb

货号: **AYP13076**

产品信息

反应	Human,Mouse,Rat
宿主	Rabbit
克隆性	Polyclonal
预测反应	WB: Sus scrofa
应用	WB
推荐浓度	WB: 1:500 - 1:2000
理论分子量	51kDa/62kDa/64kDa
实测分子量	64kDa
形式	Liquid
保存条件	Store at -20°C. Avoid freeze / thaw cycles. Buffer: PBS with 0.02% sodium azide,50% glycerol,pH7.3.
偶联物	Unconjugated
阳性对照	SH-SY5Y
细胞定位	Cell junction,Cell membrane,Multi-pass membrane protein,tight junction
纯化	Affinity purification

抗原信息

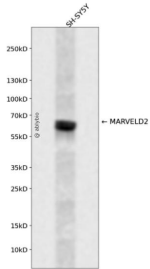
抗原信息	A synthetic peptide corresponding to a sequence within amino acids 200-300 of human MARVELD2 (NP_001033692.2).
序列	ELLGAGVFACVTAYIHKDSEWYNLFGYSQPYGMGGVGLGSMYGGYYTGPKTPFVLVAVAGLAWITTIILVLGMSMYR TILLDSNWWPLTEFGINVAL

靶点信息

研究背景	The protein encoded by this gene is a membrane protein found at the tight junctions between epithelial cells. The encoded protein helps establish epithelial barriers such as those in the organ of Corti, where these barriers are required for normal hearing. Defects in this gene are a cause of deafness autosomal recessive type 49 (DFNB49). Two transcript variants encoding different isoforms have been found for this gene.
基因ID	153562

基因名	MARVELD2
Swiss	Q8N4S9
别名	MARVELD2;DFNB49;MARVD2;MRVLDC2;Tric

产品验证



Western blot analysis of MARVELD2 expressed in SH-SY5Y using MARVELD2 Rabbit pAb at 1:1000. Secondary antibody: HRP Goat Anti-Rabbit IgG (H+L) at 1:5000. Lysates/proteins: 30ug per lane. Blocking buffer: 5% non-fat dry milk in TBST. Detection: ECL Enhanced Kit. Exposure time: 120s.

实验步骤

访问官网浏览详情: www.ablybio.cn