

SLC22A11 Rabbit pAb

货号: **AYP13070**

产品信息

反应	Human,Mouse,Rat
宿主	Rabbit
克隆性	Polyclonal
预测反应	WB: Macaca mulatta
应用	WB
推荐浓度	WB: 1:500 - 1:1000
理论分子量	48kDa/59kDa
实测分子量	65KDa
形式	Liquid
保存条件	Store at -20°C. Avoid freeze / thaw cycles. Buffer: PBS with 0.05% proclin300,50% glycerol,pH7.3.
偶联物	Unconjugated
阳性对照	MDA-MB-231,HepG2
细胞定位	Cell membrane,Multi-pass membrane protein
纯化	Affinity purification

抗原信息

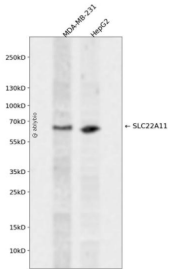
抗原信息	Recombinant fusion protein containing a sequence corresponding to amino acids 40-140 of human SLC22A11 (NP_060954.1).
序列	FSAAIPGHRCWTHMLDNGSAVSTNMTPKALLTISIPPGPNQGPQCRRFRQPWQLLDPNATATSWSEADTEPCVDGWVYDRSVFTSTIVAKWDLVCSSQG

靶点信息

研究背景	The protein encoded by this gene is involved in the sodium-independent transport and excretion of organic anions, some of which are potentially toxic. The encoded protein is an integral membrane protein and is found mainly in the kidney and in the placenta, where it may act to prevent potentially harmful organic anions from reaching the fetus. Alternative splicing results in multiple transcript variants.
基因ID	55867

基因名	SLC22A11
Swiss	Q9NSA0
别名	SLC22A11;OAT4;hOAT4

产品验证



Western blot analysis of SLC22A11 expressed in MDA-MB-231, HepG2 using SLC22A11 Rabbit pAb at 1:1000. Secondary antibody: HRP Goat Anti-Rabbit IgG (H+L) at 1:5000. Lysates/proteins: 30ug per lane. Blocking buffer: 5% non-fat dry milk in TBST. Detection: ECL Enhanced Kit. Exposure time: 120s.

实验步骤

访问官网浏览详情: www.ablybio.cn