

SETBP1 Rabbit pAb

货号: AYP13060

产品信息

反应	Human,Rat
宿主	Rabbit
克隆性	Polyclonal
预测反应	WB: Homo sapiens IF: Homo sapiens IHC: Homo sapiens
应用	WB IF/ICC
推荐浓度	WB: 1:500 - 1:2000 IF/ICC: 1:50 - 1:100
理论分子量	26kDa/175kDa
实测分子量	175kDa
形式	Liquid
保存条件	Store at -20°C. Avoid freeze / thaw cycles. Buffer: PBS with 0.02% sodium azide,50% glycerol,pH7.3.
偶联物	Unconjugated
阳性对照	NCI-H460,HeLa
细胞定位	Nucleus
纯化	Affinity purification

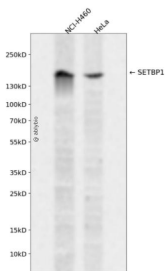
抗原信息

抗原信息	Recombinant fusion protein containing a sequence corresponding to amino acids 1-242 of human SETBP1 (NP_001123582.1).
序列	MESRETLSSSRQRGGESDFLPVSSAKPPAAPGCAGEPLLSTPGPGKGIPIVGGERMEPEEEDELGSGRDVDSNSNADSEK WVAGDGLLEEQEFISIKEANFTEGSLKLIKIQTTKRAKKPPKNLENYICPPEIKITIKQSGDQKVS RAGKNSKATKEEERSHSHSKK LLTASDLAASDLKGFQPIKIDSSKEEVWKRRGGQGIPIFKKQFLSQERAMCFSCPRNPFPKPGSLTLPFHSEPAVWAQEV

靶点信息

研究背景	This gene encodes a protein which contains a several motifs including a ski homology region and a SET-binding region in addition to three nuclear localization signals. The encoded protein has been shown to bind the SET nuclear oncogene which is involved in DNA replication. Mutations in this gene are associated with Schinzel-Giedion midface retraction syndrome. Multiple transcript variants encoding different isoforms have been found for this gene.
基因ID	26040
基因名	SETBP1
Swiss	Q9Y6X0
别名	SETBP1;MRD29;SEB

产品验证



Western blot analysis of SETBP1 expressed in NCI-H460, HeLa using SETBP1 Rabbit pAb at 1:1000. Secondary antibody: HRP Goat Anti-Rabbit IgG (H+L) at 1:5000. Lysates/proteins: 30ug per lane. Blocking buffer: 5% non-fat dry milk in TBST. Detection: ECL Enhanced Kit. Exposure time: 120s.

实验步骤

访问官网浏览详情: www.ablybio.cn