

MTFP1 Rabbit pAb

货号: **AYP13058**

产品信息

反应	Human,Mouse,Rat
宿主	Rabbit
克隆性	Polyclonal
预测反应	WB: Mus musculus
应用	WB
推荐浓度	WB: 1:500 - 1:2000
理论分子量	14kDa/18kDa
实测分子量	25kDa
形式	Liquid
保存条件	Store at -20°C. Avoid freeze / thaw cycles. Buffer: PBS with 0.02% sodium azide,50% glycerol,pH7.3.
偶联物	Unconjugated
阳性对照	Mouse liver,Mouse heart,Rat liver,Rat heart
细胞定位	Mitochondrion inner membrane,Multi-pass membrane protein
纯化	Affinity purification

抗原信息

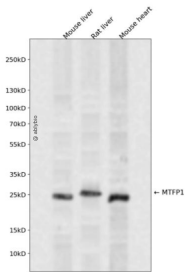
抗原信息	Recombinant fusion protein containing a sequence corresponding to amino acids 1-166 of human MTFP1 (NP_057582.2).
序列	MSEPQPRGAERDLYRDTWVRYLGYANEVGEAFRSLVPAAVVWLSYGVASSYVLADAIDKGGKAGEVPSPEAGRSARVTV AVVDTFVWQALASVAIPGFTINRVCAASLYVLGTATRWPLAVRKWTTTALGLLTIPIIIHPIDRSVDFLLDSSLRKLYPTVGKPS SSS

靶点信息

研究背景	MTP18 is a mitochondrial protein and downstream target of the phosphatidylinositol 3-kinase (see PIK3CA , MIM 171834) signaling pathway that plays a role in cell viability and mitochondrial dynamics (Tondera et al., 2004 [PubMed 15155745]).
基因ID	51537

基因名	MTFP1
Swiss	Q9UDX5
别名	MTFP1;HSPC242;MTP18

产品验证



Western blot analysis of MTFP1 expressed in Mouse liver,Rat liver,Mouse heart using MTFP1 Rabbit pAb at 1:1000. Secondary antibody: HRP Goat Anti-Rabbit IgG (H+L) at 1:5000. Lysates/proteins: 30ug per lane. Blocking buffer: 5% non-fat dry milk in TBST. Detection: ECL Enhanced Kit. Exposure time: 120s.

实验步骤

访问官网浏览详情: www.ablybio.cn