

QPCT Rabbit pAb

货号: **AYP13051**

产品信息

反应	Human,Mouse,Rat
宿主	Rabbit
克隆性	Polyclonal
预测反应	WB: Homo sapiens
应用	WB IF/ICC
推荐浓度	WB: 1:500 - 1:2000 IF/ICC: 1:50 - 1:100
理论分子量	35kDa/40kDa
实测分子量	41KDa
形式	Liquid
保存条件	Store at -20°C. Avoid freeze / thaw cycles. Buffer: PBS with 0.02% sodium azide,50% glycerol,pH7.3.
偶联物	Unconjugated
阳性对照	Mouse liver,Rat liver
细胞定位	Secreted
纯化	Affinity purification

抗原信息

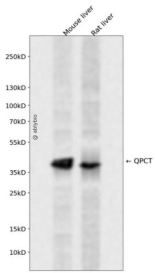
抗原信息	Recombinant fusion protein containing a sequence corresponding to amino acids 1-361 of human QPCT (NP_036545.1).
序列	MAGGRHRRVVGTLHLLLLVAALPWASRGVSPSASAWPEEKNYHQPAILNSSALRQIAEGTSISEMWQNDLQPLLIERYPGS PGSYAARQHIMQRIQLQADWVLEIDTFLSQTPYGYRSFSNIISTLNPTAKRHLVLACHYDSKYFSHWNNRVFVGATDSAV PCAMMLELARALDKLLSLKTVSDSKPDLSLQLIFFDGEEAFLHWSPQDSLYGSRHLAAKMASTPHPPGARGTSQLHGM DLLVLLDLIGAPNPTFPNFFPNSARWFERLQAIHELHELGLLKDHSLEGRYFQNYSYGGVIQDDHIPFLRRGVPVLHLIPSP FPEVWHTMDDNEENLDESTIDNLNKILQVFVLEYLHL

靶点信息

研究背景	This gene encodes human pituitary glutaminy cyclase, which is responsible for the presence of pyroglutamate residues in many neuroendocrine peptides. The amino acid sequence of this enzyme is 86% identical to that of bovine glutaminy cyclase.
------	--

基因ID	25797
基因名	QPCT
Swiss	Q16769
别名	QPCT;GCT;QC;SQC

产品验证



Western blot analysis of QPCT expressed in Mouse liver,Rat liver using QPCT Rabbit pAb at 1:1000. Secondary antibody: HRP Goat Anti-Rabbit IgG (H+L) at 1:5000. Lysates/proteins: 30ug per lane. Blocking buffer: 5% non-fat dry milk in TBST. Detection: ECL Enhanced Kit. Exposure time: 120s.

实验步骤

访问官网浏览详情: www.ablybio.cn