

KIF1B Rabbit pAb

货号: **AYP13049**

产品信息

反应	Human,Mouse,Rat
宿主	Rabbit
克隆性	Polyclonal
预测反应	IF: Mus musculus
应用	WB
推荐浓度	WB: 1:500 - 1:2000
理论分子量	130kDa/199kDa/204kDa/205kDa
实测分子量	204kDa
形式	Liquid
保存条件	Store at -20°C. Avoid freeze / thaw cycles. Buffer: PBS with 0.02% sodium azide,50% glycerol,pH7.3.
偶联物	Unconjugated
阳性对照	SKOV3
细胞定位	Cytoplasm,Cytoplasmic vesicle,Mitochondrion,cytoskeleton
纯化	Affinity purification

抗原信息

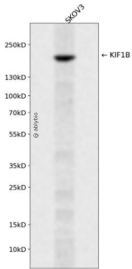
抗原信息	Recombinant fusion protein containing a sequence corresponding to amino acids 1501-1770 of human KIF1B (NP_055889.2).
序列	SQISTTTFESAITPSESSGYDSGDIESLVDREKELATKCLQLLTHTFNREFSQVHGSVSDCKLSDISPIGRDPSESSFSSATLTPSSTCPSLVDSRSNSLDQKTPEANSRASSPCPEFEQFQIVPAVETPYLARAGKNEFLNLVPDIEEIRPSSVVS KKGYLHFKE PLYSNWAKHFVVRRPYVFIYNSDKDPVERGIINLSTAQVEYSEDQQAMVKTPNTFAVCTKHRGVLLQALNDKDMNDWL YAFNPLLAGTIRSKLSRRCPQSQSKY

靶点信息

研究背景	This gene encodes a motor protein that transports mitochondria and synaptic vesicle precursors. Mutations in this gene cause Charcot-Marie-Tooth disease, type 2A1.
基因ID	23095

基因名	KIF1B
Swiss	O60333
别名	KIF1B;CMT2;CMT2A;CMT2A1;HMSNII;KLP;NBLST1

产品验证



Western blot analysis of KIF1B expressed in SKOV3 using KIF1B Rabbit pAb at 1:1000. Secondary antibody : HRP Goat Anti-Rabbit IgG (H+L) at 1:5000. Lysates/proteins: 30ug per lane. Blocking buffer: 5% non-fat dry milk in TBST. Detection: ECL Enhanced Kit. Exposure time: 120s.

实验步骤

访问官网浏览详情: www.ablybio.cn