

CPSF3L Rabbit pAb

货号: **AYP13047**

产品信息

反应	Human,Mouse,Rat
宿主	Rabbit
克隆性	Polyclonal
预测反应	WB: Mus musculus
应用	WB IF/ICC IP
推荐浓度	WB: 1:500 - 1:2000 IF/ICC: 1:10 - 1:100 IP: 1:100 - 1:500
理论分子量	56kDa/64kDa/65kDa/67kDa/68kDa
实测分子量	68kDa
形式	Liquid
保存条件	Store at -20°C. Avoid freeze / thaw cycles. Buffer: PBS with 0.02% sodium azide,50% glycerol,pH7.3.
偶联物	Unconjugated
阳性对照	HeLa,SKOV3,MCF7,Mouse spleen,Rat liver
细胞定位	Cytoplasm,Nucleus
纯化	Affinity purification

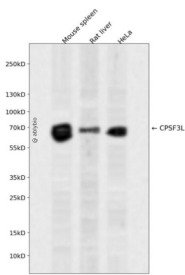
抗原信息

抗原信息	Recombinant fusion protein containing a sequence corresponding to amino acids 331-600 of human CPSF 3L (NP_060341.2).
序列	GQSLQIFRKWAGNEKNMVIMPGYCVQGTGVGHKILSGQRKLEMEGRQVLEVKMQVEYMSFSAHADAKGIMQLVVGQAEPE SVLLVHGEAKKMEFLKQKIEQELRVNCPANGETVTLPSPSPVPGISLGLLKREMAQGLLPEAKKPRLLHGTLMKDSNFR LVSSEQALKELGLAEHQLRFTCRVHLHDTRKEQETALRVYSHLKSVLKDHCVQHLPDGSVTVESVLLQAAAPSEDPGTKVL LVSWTYQDEELGSFLTSLKKGLPQAPS

靶点信息

研究背景	The Integrator complex contains at least 12 subunits and associates with the C-terminal domain of RNA polymerase II large subunit (POLR2A; MIM 180660) and mediates the 3-prime end processing of small nuclear RNAs U1 (RNU1; MIM 180680) and U2 (RNU2; MIM 180690). INTS11, or CPSF3L, is the catalytic subunit of the Integrator complex (Baillat et al., 2005 [PubMed 16239144]).[supplied by OMIM, Mar 2008]
基因ID	54973
基因名	INTS11
Swiss	Q5TA45
别名	INTS11;CPSF3L;CPSF73L;INT11;RC-68;RC68

产品验证



Western blot analysis of CPSF3L expressed in Mouse spleen, Rat liver, HeLa using CPSF3L Rabbit pAb at 1:1000. Secondary antibody: HRP Goat Anti-Rabbit IgG (H+L) at 1:5000. Lysates/proteins: 30ug per lane. Blocking buffer: 5% non-fat dry milk in TBST. Detection: ECL Enhanced Kit. Exposure time: 120s.

实验步骤

访问官网浏览详情: www.ablybio.cn