

CPEB1 Rabbit pAb

货号: **AYP13043**

产品信息

反应	Human,Mouse,Rat
宿主	Rabbit
克隆性	Polyclonal
预测反应	WB: Homo sapiens
应用	WB
推荐浓度	WB: 1:500 - 1:2000
理论分子量	53kDa/54kDa/62kDa
实测分子量	62kDa
形式	Liquid
保存条件	Store at -20°C. Avoid freeze / thaw cycles. Buffer: PBS with 0.02% sodium azide,50% glycerol,pH7.3.
偶联物	Unconjugated
阳性对照	SH-SY5Y,K-562,Mouse brain,Rat liver
细胞定位	Cell junction,Cell projection,Cytoplasm,Cytoplasmic granule,Membrane,P-body,dendrite,postsynaptic cell membrane,postsynaptic density,synapse
纯化	Affinity purification

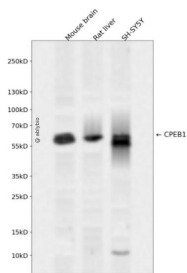
抗原信息

抗原信息	Recombinant fusion protein containing a sequence corresponding to amino acids 282-561 of human CPEB 1 (NP_085097.3).
序列	HRQAAAVNEATCTWSGQLPPRNYKNPIYSCKVFLGGVPWDITEAGLVNTRVFGSLSVEWPGKDGKHPRCPPKGYVYLVELEKSVRSLQACSHDPLSPDGLSEYYFKMSSRRMRCKEVQVIPWVLADSNFVRSRPSQRLDPSRTVFGALHGMLNAEALAAILNDLFGGVVYAGIDTDKHKYPIGSGRVTFNNQRSYLKAVSAAFVEIKTTKFTKKVQIDPYLEDLCHICSSQPGPFPCR DQVCFKYFCRSCWHWRHSMELRHHSPLMRNQKNRDSS

靶点信息

研究背景	This gene encodes a member of the cytoplasmic polyadenylation element binding protein family. This highly conserved protein binds to a specific RNA sequence, called the cytoplasmic polyadenylation element, found in the 3' untranslated region of some mRNAs. The encoded protein functions in both the cytoplasm and the nucleus. It is involved in the regulation of mRNA translation, as well as processing of the 3' untranslated region, and may play a role in cell proliferation and tumorigenesis. Alternative splicing results in multiple transcript variants.
基因ID	64506
基因名	CPEB1
Swiss	Q9BZB8
别名	CPEB1;CPE-BP1;CPEB;CPEB-1;h-CPEB;hCPEB-1

产品验证



Western blot analysis of CPEB1 expressed in Mouse brain, Rat liver, SH-SY5Y using CPEB1 Rabbit pAb at 1:1000. Secondary antibody: HRP Goat Anti-Rabbit IgG (H+L) at 1:5000. Lysates/proteins: 30ug per lane. Blocking buffer: 5% non-fat dry milk in TBST. Detection: ECL Enhanced Kit. Exposure time: 120s.

实验步骤

访问官网浏览详情: www.ablybio.cn