

IL-1 alpha Rabbit pAb

货号: **AYP13028**

产品信息

反应	Human,Mouse,Rat
宿主	Rabbit
克隆性	Polyclonal
预测反应	IHC: Rattus norvegicus,Homo sapiens
应用	WB
推荐浓度	WB: 1:500 - 1:1000
理论分子量	30kDa
实测分子量	20KDa
形式	Liquid
保存条件	Store at -20°C. Avoid freeze / thaw cycles. Buffer: PBS with 0.01% thiomersal,50% glycerol,pH7.3.
偶联物	Unconjugated
阳性对照	RAW264.7,HepG2,A-549,Mouse liver,Rat liver,Rat testis
细胞定位	Secreted
纯化	Affinity purification

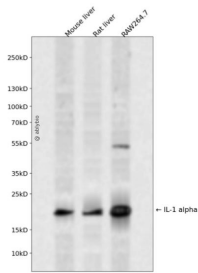
抗原信息

抗原信息	Recombinant fusion protein containing a sequence corresponding to amino acids 1-271 of human IL-1 alpha (NP_000566.3).
序列	MAKVPDMFEDLKNCYSENEEDSSSIDHLSLNQKSFYHVSYGPLHEGCMQSVLSISSETSKLTFKESMVVVATNGKV LKKRRLSLSQSITDDDLLEAIANDSEEEIIPRSAPFSFLSNVKYFMRIIKYEFILNDALNQSIIRANDQYLTAALHNLDEAVK FDMGAYKSSKDDAKITVILRISKTLQLYVTAQDEDPVLLKEMPEIPKTITGSETNLLFFWETHGTKNYFTSVAHPNLFIA TKQ DYWVCLAGGPPSITDFQILENQA

靶点信息

研究背景	The protein encoded by this gene is a member of the interleukin 1 cytokine family. This cytokine is a pleiotropic cytokine involved in various immune responses, inflammatory processes, and hematopoiesis. This cytokine is produced by monocytes and macrophages as a proprotein, which is proteolytically processed and released in response to cell injury, and thus induces apoptosis. This gene and eight other interleukin 1 family genes form a cytokine gene cluster on chromosome 2. It has been suggested that the polymorphism of these genes is associated with rheumatoid arthritis and Alzheimer's disease.
基因ID	3552
基因名	IL1A
Swiss	P01583
别名	IL1A;IL-1A;IL1;IL1-ALPHA;IL1F1

产品验证



Western blot analysis of IL-1 alpha expressed in Mouse liver, Rat liver, RAW264.7 using IL-1 alpha Rabbit pAb at 1:1000. Secondary antibody: HRP Goat Anti-Rabbit IgG (H+L) at 1:5000. Lysates/proteins: 30 ug per lane. Blocking buffer: 5% non-fat dry milk in TBST. Detection: ECL Enhanced Kit. Exposure time : 120s.

实验步骤

访问官网浏览详情: www.ablybio.cn