

ETV6 Rabbit pAb

货号: **AYP13016**

产品信息

反应	Human,Mouse,Rat
宿主	Rabbit
克隆性	Polyclonal
预测反应	WB: hsa
应用	WB IHC
推荐浓度	WB: 1:500 - 1:1000 IHC: 1:50 - 1:200
理论分子量	53kDa
实测分子量	53KDa
形式	Liquid
保存条件	Store at -20°C. Avoid freeze / thaw cycles. Buffer: PBS with 0.05% proclin300,50% glycerol,pH7.3.
偶联物	Unconjugated
阳性对照	HeLa,Jurkat,K-562,Mouse ovary,Mouse kidney,Rat lung,Rat kidney
细胞定位	Nucleus
纯化	Affinity purification

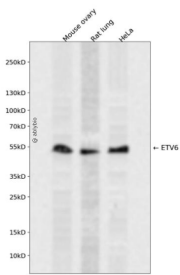
抗原信息

抗原信息	Recombinant fusion protein containing a sequence corresponding to amino acids 1-300 of human ETV6 (NP_001978.1).
序列	MSETPAQCSIKQERISYTPESPVPVSYASSTPLHVPVPRALRMEEDSIRLPAHLRLQPIYWSRDDVAQWLKWAENEFSLRPI DSNTFEMNGKALLLLTKEDFRYRSPHSGDVLQYELLQHILKQRKPRILFSPFFHPGNSIHTQPEVILHQNHEDNCVQRTPRP SVDNVHHNPPTIELLHRSRSPITTNHRPSPDPEQRPLRSPLDNMIRRLSPAERAQGPRPHQENNHQESYPLSVSPMENNHC PASSESHPKPSSPRQESTRVIQLMPSPIMHPLILNPRHSVDFKQSRLSEDGLHRE

靶点信息

研究背景	This gene encodes an ETS family transcription factor. The product of this gene contains two functional domains: a N-terminal pointed (PNT) domain that is involved in protein-protein interactions with itself and other proteins, and a C-terminal DNA-binding domain. Gene knockout studies in mice suggest that it is required for hematopoiesis and maintenance of the developing vascular network. This gene is known to be involved in a large number of chromosomal rearrangements associated with leukemia and congenital fibrosarcoma.
基因ID	2120
基因名	ETV6
Swiss	P41212
别名	ETV6;TEL;TEL/ABL;THC5

产品验证



Western blot analysis of ETV6 expressed in Mouse ovary, Rat lung, HeLa using ETV6 Rabbit pAb at 1:1000. Secondary antibody: HRP Goat Anti-Rabbit IgG (H+L) at 1:5000. Lysates/proteins: 30ug per lane. Blocking buffer: 5% non-fat dry milk in TBST. Detection: ECL Enhanced Kit. Exposure time: 120s.

实验步骤

访问官网浏览详情: www.ablybio.cn