

Phospho-Cytokeratin 18 (KRT18)-S33 Rabbit pAb

货号: **AYP13009**

产品信息

反应	Human
宿主	Rabbit
克隆性	Polyclonal
预测反应	WB: Homo sapiens
应用	WB IHC
推荐浓度	WB: 1:500 - 1:1000 IHC: 1:50 - 1:100
理论分子量	48kDa
实测分子量	48kDa
形式	Liquid
保存条件	Store at -20°C. Avoid freeze / thaw cycles. Buffer: PBS with 0.02% sodium azide, 50% glycerol, pH7.3.
偶联物	Unconjugated
阳性对照	HT-29
细胞定位	Cytoplasm, Nucleus, nucleolus, perinuclear region
纯化	Affinity purification

抗原信息

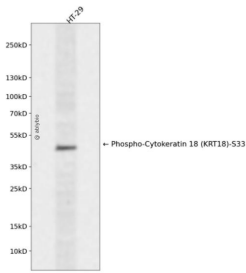
抗原信息	A phospho specific peptide corresponding to residues surrounding S33 of human KRT18
序列	

靶点信息

研究背景	KRT18 encodes the type I intermediate filament chain keratin 18. Keratin 18, together with its filament partner keratin 8, are perhaps the most commonly found members of the intermediate filament gene family. They are expressed in single layer epithelial tissues of the body. Mutations in this gene have been linked to cryptogenic cirrhosis. Two transcript variants encoding the same protein have been found for this gene.
------	--

基因ID	3875
基因名	KRT18
Swiss	P05783
别名	KRT18;CK-18;CYK18;K18;keratin 18

产品验证



Western blot analysis of Phospho-Cytokeratin 18 (KRT18)-S33 expressed in HT-29 using Phospho-Cytokeratin 18 (KRT18)-S33 Rabbit pAb at 1:1000. Secondary antibody: HRP Goat Anti-Rabbit IgG (H+L) at 1:5000. Lysates/proteins: 30ug per lane. Blocking buffer: 5% non-fat dry milk in TBST. Detection: ECL Enhanced Kit. Exposure time: 120s.

实验步骤

访问官网浏览详情: www.ablybio.cn