

Phospho-ATF4-S245 Rabbit pAb

货号: **AYP13008**

产品信息

| | |
|-------|--|
| 反应 | Human |
| 宿主 | Rabbit |
| 克隆性 | Polyclonal |
| 预测反应 | WB: Oryza sativa |
| 应用 | WB IHC |
| 推荐浓度 | WB: 1:500 - 1:2000 IHC: 1:50 - 1:100 |
| 理论分子量 | 38kDa |
| 实测分子量 | 45kDa |
| 形式 | Liquid |
| 保存条件 | Store at -20°C. Avoid freeze / thaw cycles. Buffer: PBS with 0.02% sodium azide,50% glycerol,pH7.3. |
| 偶联物 | Unconjugated |
| 阳性对照 | HeLa |
| 细胞定位 | Cell membrane,Cytoplasm,Nucleus,centrosome,cytoskeleton,microtubule organizing center |
| 纯化 | Affinity purification |

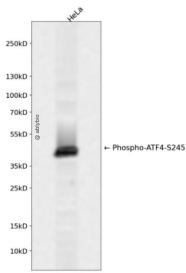
抗原信息

| | |
|------|---|
| 抗原信息 | A phospho specific peptide corresponding to residues surrounding S245 of human ATF4 |
| 序列 | |

靶点信息

| | |
|-------|--|
| 研究背景 | This gene encodes a transcription factor that was originally identified as a widely expressed mammalian DNA binding protein that could bind a tax-responsive enhancer element in the LTR of HTLV-1. The encoded protein was also isolated and characterized as the cAMP-response element binding protein 2 (CREB-2). The protein encoded by this gene belongs to a family of DNA-binding proteins that includes the AP-1 family of transcription factors, cAMP-response element binding proteins (CREBs) and CREB-like proteins. These transcription factors share a leucine zipper region that is involved in protein-protein interactions, located C-terminal to a stretch of basic amino acids that functions as a DNA binding domain. Two alternative transcripts encoding the same protein have been described. Two pseudogenes are located on the X chromosome at q28 in a region containing a large inverted duplication. |
| 基因ID | 468 |
| 基因名 | ATF4 |
| Swiss | P18848 |
| 别名 | ATF4;CREB-2;CREB2;TAXREB67;TXREB |

产品验证



Western blot analysis of Phospho-ATF4-S245 expressed in HeLa using Phospho-ATF4-S245 Rabbit pAb at 1:1000. Secondary antibody: HRP Goat Anti-Rabbit IgG (H+L) at 1:5000. Lysates/proteins: 30ug per lane. Blocking buffer: 5% non-fat dry milk in TBST. Detection: ECL Enhanced Kit. Exposure time: 120s.

实验步骤

访问官网浏览详情: www.ablybio.cn