

# Phospho-MYL12A-S18 Rabbit pAb

货号: **AYP13002**

## 产品信息

反应	Human,Rat
宿主	Rabbit
克隆性	Polyclonal
预测反应	<b>WB:</b> Mus musculus
应用	<a href="#">WB</a> <a href="#">IHC</a>
推荐浓度	<b>WB:</b> 1:500 - 1:2000 <b>IHC:</b> 1:50 - 1:100
理论分子量	19kDa
实测分子量	20kDa
形式	Liquid
保存条件	Store at -20°C. Avoid freeze / thaw cycles. Buffer: PBS with 0.02% sodium azide,50% glycerol,pH7.3.
偶联物	Unconjugated
阳性对照	293
细胞定位	cytoplasm,cytosol,extracellular exosome,Z disc
纯化	Affinity purification

## 抗原信息

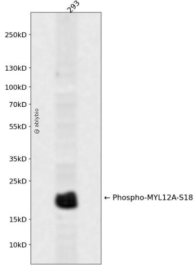
抗原信息	A phospho specific peptide corresponding to residues surrounding S18 of human MYL12A
序列	

## 靶点信息

研究背景	This gene encodes a nonsarcomeric myosin regulatory light chain. This protein is activated by phosphorylation and regulates smooth muscle and non-muscle cell contraction. This protein may also be involved in DNA damage repair by sequestering the transcriptional regulator apoptosis-antagonizing transcription factor (AATF)/Che-1 which functions as a repressor of p53-driven apoptosis. Alternate splicing results in multiple transcript variants. A pseudogene of this gene is found on chromosome 8.
基因ID	10627

基因名	MYL12A
Swiss	P19105
别名	MYL12A;HEL-S-24;MLC-2B;MLCB;MRCL3;MRLC3;MYL2B

## 产品验证



Western blot analysis of Phospho-MYL12A-S18 expressed in 293 using Phospho-MYL12A-S18 Rabbit pAb at 1:1000. Secondary antibody: HRP Goat Anti-Rabbit IgG (H+L) at 1:5000. Lysates/proteins: 30ug per lane. Blocking buffer: 5% non-fat dry milk in TBST. Detection: ECL Enhanced Kit. Exposure time: 120 S.

## 实验步骤

访问官网浏览详情: [www.ablybio.cn](http://www.ablybio.cn)