

# Phospho-SRC Family-Y416 Rabbit pAb

货号: **AYP12997**

## 产品信息

反应	Human,Mouse,Rat
宿主	Rabbit
克隆性	Polyclonal
预测反应	<b>WB:</b> Homo sapiens
应用	<a href="#">WB</a>
推荐浓度	<b>WB:</b> 1:500 - 1:2000
理论分子量	59kDa/60kDa
实测分子量	60kDa
形式	Liquid
保存条件	Store at -20°C. Avoid freeze / thaw cycles. Buffer: PBS with 0.02% sodium azide,50% glycerol,pH7.3.
偶联物	Unconjugated
阳性对照	NIH/3T3
细胞定位	Cell membrane,Cytoplasm,Mitochondrion inner membrane,Nucleus,cytoskeleton
纯化	Affinity purification

## 抗原信息

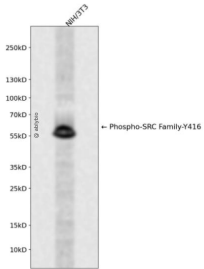
抗原信息	A synthetic phosphorylated peptide around Y416 of human SRC Family (NP_005408.1).
序列	EDNEY

## 靶点信息

研究背景	This gene is highly similar to the v-src gene of Rous sarcoma virus. This proto-oncogene may play a role in the regulation of embryonic development and cell growth. The protein encoded by this gene is a tyrosine protein kinase whose activity can be inhibited by phosphorylation by c-SRC kinase. Mutations in this gene could be involved in the malignant progression of colon cancer. Two transcript variants encoding the same protein have been found for this gene.
基因ID	2534,3055,3932,4067,6714,7525

基因名	FYN,HCK,LCK,LYN,SRC,YES1
Swiss	P06241,P08631,P06239,P07948,P12931,P07947
别名	ASV;SRC1;THC6;c-SRC;p60-Src;SRC

## 产品验证



Western blot analysis of Phospho-SRC Family-Y416 expressed in NIH/3T3 using Phospho-SRC Family-Y416 Rabbit pAb at 1:1000. Secondary antibody: HRP Goat Anti-Rabbit IgG (H+L) at 1:5000. Lysates/proteins: 30ug per lane. Blocking buffer: 5% non-fat dry milk in TBST. Detection: ECL Enhanced Kit. Exposure time: 120s.

## 实验步骤

访问官网浏览详情: [www.ablybio.cn](http://www.ablybio.cn)