

# Phospho-PKC (pan) (zeta)-T410 Rabbit pAb

货号: **AYP12993**

## 产品信息

反应	Human,Mouse,Rat
宿主	Rabbit
克隆性	Polyclonal
预测反应	<b>WB:</b> Mus musculus
应用	<a href="#">WB</a>
推荐浓度	<b>WB:</b> 1:500 - 1:2000
理论分子量	46kDa/56-68kDa/74-83kDa
实测分子量	85kDa
形式	Liquid
保存条件	Store at -20°C. Avoid freeze / thaw cycles. Buffer: PBS with 0.01% thiomersal,50% glycerol,pH7.3.
偶联物	Unconjugated
阳性对照	C6
细胞定位	cytoplasm,cytosol,endoplasmic reticulum,extracellular exosome,mitochondrial membrane,mitochondrion, nucleoplasm,perinuclear region of cytoplasm,plasma membrane
纯化	Affinity purification

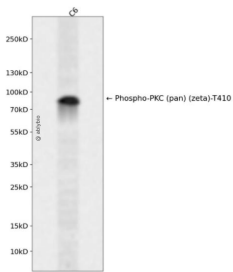
## 抗原信息

抗原信息	A synthetic phosphorylated peptide around T410 of human PRKCZ (NP_002735.3).
序列	TSTFC

## 靶点信息

研究背景	Protein kinase C (PKC) is a family of serine- and threonine-specific protein kinases that can be activated by calcium and the second messenger diacylglycerol. PKC family members phosphorylate a wide variety of protein targets and are known to be involved in diverse cellular signaling pathways. PKC family members also serve as major receptors for phorbol esters, a class of tumor promoters. Each member of the PKC family has a specific expression profile and is believed to play a distinct role in cells. The protein encoded by this gene is one of the PKC family members. This kinase has been reported to play roles in many different cellular processes, such as cell adhesion, cell transformation, cell cycle checkpoint, and cell volume control. Knockout studies in mice suggest that this kinase may be a fundamental regulator of cardiac contractility and Ca(2+) handling in myocytes. [provided by RefSeq, Jul 2008]
基因ID	5578,5579,5580,5581,5582,5583,5584,5588,5590
基因名	PRKCA,PRKCB,PRKCD,PRKCE,PRKCG,PRKCH,PRKCI,PRKCQ,PRKCZ
Swiss	P17252,P05771,Q05655,Q02156,P05129,P24723,P41743,Q04759,Q05513
别名	PRKCA/PRKCB/PRKCD/PRKCE/PRKCG/PRKCH/PRKCI/PRKCQ/PRKCZ

## 产品验证



Western blot analysis of Phospho-PKC (pan) (zeta)-T410 expressed in C6 using Phospho-PKC (pan) (zeta)-T410 Rabbit pAb at 1:1000. Secondary antibody: HRP Goat Anti-Rabbit IgG (H+L) at 1:5000. Lysates/proteins: 30ug per lane. Blocking buffer: 5% non-fat dry milk in TBST. Detection: ECL Enhanced Kit. Exposure time: 120s.

## 实验步骤

访问官网浏览详情: [www.ablybio.cn](http://www.ablybio.cn)