

# Phospho-MET-Y1234/1235 Rabbit pAb

货号: AYP12989

## 产品信息

反应	Human
宿主	Rabbit
克隆性	Polyclonal
预测反应	<b>WB:</b> Homo sapiens
应用	<a href="#">WB</a>
推荐浓度	<b>WB:</b> 1:500 - 1:1000
理论分子量	85kDa/155kDa/157kDa
实测分子量	145KDa
形式	Liquid
保存条件	Store at -20°C. Avoid freeze / thaw cycles. Buffer: PBS with 0.05% proclin300,50% glycerol,pH7.3.
偶联物	Unconjugated
阳性对照	HeLa
细胞定位	Membrane,Secreted,Single-pass type I membrane protein
纯化	Affinity purification

## 抗原信息

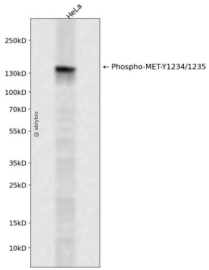
抗原信息	A synthetic phosphorylated peptide around Y1234 & Y1235 of human MET (NP_000236.2).
序列	KEYYSV

## 靶点信息

研究背景	This gene encodes a member of the receptor tyrosine kinase family of proteins and the product of the proto-oncogene MET. The encoded preproprotein is proteolytically processed to generate alpha and beta subunits that are linked via disulfide bonds to form the mature receptor. Further processing of the beta subunit results in the formation of the M10 peptide, which has been shown to reduce lung fibrosis. Binding of its ligand, hepatocyte growth factor, induces dimerization and activation of the receptor, which plays a role in cellular survival, embryogenesis, and cellular migration and invasion. Mutations in this gene are associated with papillary renal cell carcinoma, hepatocellular carcinoma, and various head and neck cancers. Amplification and overexpression of this gene are also associated with multiple human cancers.
------	--

基因ID	4233
基因名	MET
Swiss	P08581
别名	MET;AUTS9;DFNB97;HGFR;RCCP2;c-Met

## 产品验证



## 实验步骤

访问官网浏览详情: [www.ablybio.cn](http://www.ablybio.cn)