

MRPS30 Rabbit pAb

货号: AYP12936

产品信息

反应	Human,Mouse,Rat
宿主	Rabbit
克隆性	Polyclonal
预测反应	WB: Human 无: 无
应用	WB IF/ICC IP
推荐浓度	WB: 1:500 - 1:2000 IF/ICC: 1:50 - 1:100 IP: 1:50 - 1:200
理论分子量	50kDa
实测分子量	54kDa
形式	Liquid
保存条件	Store at -20°C. Avoid freeze / thaw cycles. Buffer: PBS with 0.02% sodium azide,50% glycerol,pH7.3.
偶联物	Unconjugated
阳性对照	SW620,HL-60,HeLa,HepG2
细胞定位	Mitochondrion
纯化	Affinity purification

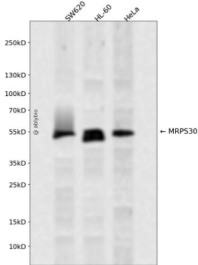
抗原信息

抗原信息	Recombinant fusion protein containing a sequence corresponding to amino acids 190-439 of human MRP S30 (NP_057724.2).
序列	PHNPALAAAALDYRCPVHFYWVRGEEIIPRGHRRGRIDDRLRYQIDDKPNNQIRISKQLAEFVPLDYSVPIEPTIKCKPDKLPLF KRQYENHIFVGSKTADPCCYGHTQFHLLPDKLRRERLLRQNCADQIEVVFRANAIASLFAWTGAQAMYQGFWSEADVTRP FVSQAVITDGKYFSFFCYQLNLTALTTQADQNNPRKNICWGTQSKPLYETIEDNDVKGFNDVLLQIVHFLLNRPKEEKSQ LLEN

靶点信息

研究背景	Mammalian mitochondrial ribosomal proteins are encoded by nuclear genes and help in protein synthesis within the mitochondrion. Mitochondrial ribosomes (mitoribosomes) consist of a small 28S subunit and a large 39S subunit. They have an estimated 75% protein to rRNA composition compared to prokaryotic ribosomes, where this ratio is reversed. Another difference between mammalian mitoribosomes and prokaryotic ribosomes is that the latter contain a 5S rRNA. Among different species, the proteins comprising the mitoribosome differ greatly in sequence, and sometimes in biochemical properties, which prevents easy recognition by sequence homology. This gene encodes a 28S subunit protein that is similar to the chicken pro-apoptotic protein p52. Transcript variants using alternative promoters or polyA sites have been mentioned in the literature but the complete description of these sequences is not available.
基因ID	10884
基因名	MRPS30
Swiss	Q9NP92
别名	MRPS30;MRP-S30;PAP;PDCD9;S30mt

产品验证



Western blot analysis of MRPS30 expressed in SW620,HL-60,HeLa using MRPS30 Rabbit pAb at 1:1000 . Secondary antibody: HRP Goat Anti-Rabbit IgG (H+L) at 1:5000. Lysates/proteins: 30ug per lane. Blocking buffer: 5% non-fat dry milk in TBST. Detection: ECL Enhanced Kit. Exposure time: 120s.

实验步骤

访问官网浏览详情: www.ablybio.cn