

GLI2 Rabbit pAb

货号: **AYP12931**

产品信息

反应	Mouse,Rat
宿主	Rabbit
克隆性	Polyclonal
预测反应	WB: Mouse liver , Mus musculus
应用	WB
推荐浓度	WB: 1:500 - 1:2000
理论分子量	168kDa
实测分子量	90kDa
形式	Liquid
保存条件	Store at -20°C. Avoid freeze / thaw cycles. Buffer: PBS with 0.02% sodium azide,50% glycerol,pH7.3.
偶联物	Unconjugated
阳性对照	Mouse lung,Mouse brain,Mouse heart,Mouse ovary,Mouse pancreas,Rat brain
细胞定位	Cytoplasm,Nucleus
纯化	Affinity purification

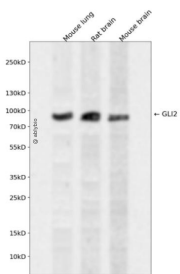
抗原信息

抗原信息	Recombinant fusion protein containing a sequence corresponding to amino acids 1-175 of mus musculus GLI2 (NP_001074594.1).
序列	METSAPAPALEKKEAKSGLLEDSSFPDPGKKACPLAVAAVAHGVPPQQLLPAFHAPLPIDMRHQEGRYHYDPHSVHSVH GPPTLSGSPVISDISLIRLSPHPAGPGESPFSAHHPYVNPHEHYLRVHSSPTLSMISAARGLSPADVAHEHLKERGLFSLA APGTNPSDYHQ

靶点信息

研究背景	This gene encodes a protein which belongs to the C2H2-type zinc finger protein subclass of the Gli family. Members of this subclass are characterized as transcription factors which bind DNA through zinc finger motifs. These motifs contain conserved H-C links. Gli family zinc finger proteins are mediators of Sonic hedgehog (Shh) signaling and they are implicated as potent oncogenes in the embryonal carcinoma cell. The protein encoded by this gene localizes to the cytoplasm and activates patched Drosophila homolog (PTCH) gene expression. It is also thought to play a role during embryogenesis. The encoded protein is associated with several phenotypes- Greig cephalopolysyndactyly syndrome, Pallister-Hall syndrome, preaxial polydactyly type IV, postaxial polydactyly types A1 and B.
基因ID	14633
基因名	
Swiss	
别名	GLI2;CJS;HPE9;PHS2;THP1;THP2;Gli2

产品验证



Western blot analysis of GLI2 expressed in Mouse lung,Rat brain,Mouse brain using GLI2 Rabbit pAb at 1:1000. Secondary antibody: HRP Goat Anti-Rabbit IgG (H+L) at 1:5000. Lysates/proteins: 30ug per lane. Blocking buffer: 5% non-fat dry milk in TBST. Detection: ECL Enhanced Kit. Exposure time: 120s.

实验步骤

访问官网浏览详情: www.ablybio.cn