

SLC1A5 Rabbit pAb

货号: **AYP12928**

产品信息

反应	Human,Mouse,Rat
宿主	Rabbit
克隆性	Polyclonal
预测反应	WB: HCT116 , Mus musculus
应用	WB
推荐浓度	WB: 1:500 - 1:1000
理论分子量	33kDa/36kDa/56kDa
实测分子量	75kDa
形式	Liquid
保存条件	Store at -20°C. Avoid freeze / thaw cycles. Buffer: PBS with 0.05% proclin300,50% glycerol,pH7.3.
偶联物	Unconjugated
阳性对照	HeLa,SW620,A-549,Mouse lung,Mouse fat,Rat thymus,Rat spleen
细胞定位	Cell membrane,Melanosome,Multi-pass membrane protein
纯化	Affinity purification

抗原信息

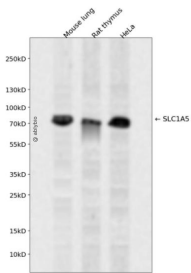
抗原信息	Recombinant fusion protein containing a sequence corresponding to amino acids 482-540 of human SLC1A5 (NP_005619.1).
序列	LQNYVDRTESRSTPELIQVKSELPLDPLVPTEEGNPLLKHYRGPAGDATVASEKESV

靶点信息

研究背景	The SLC1A5 gene encodes a sodium-dependent neutral amino acid transporter that can act as a receptor for RD114/type D retrovirus (Larriba et al., 2001 [PubMed 11781704]).[supplied by OMIM, Jan 2011]
基因ID	6510
基因名	SLC1A5

Swiss	Q15758
别名	SLC1A5;AAAT;ASCT2;ATBO;M7V1;M7VS1;R16;RDRC

产品验证



Western blot analysis of SLC1A5 expressed in Mouse lung,Rat thymus,HeLa using SLC1A5 Rabbit pAb at 1:1000. Secondary antibody: HRP Goat Anti-Rabbit IgG (H+L) at 1:5000. Lysates/proteins: 30ug per lane. Blocking buffer: 5% non-fat dry milk in TBST. Detection: ECL Enhanced Kit. Exposure time: 120s.

实验步骤

访问官网浏览详情: www.ablybio.cn