

HACE1 Rabbit pAb

货号: **AYP12918**

产品信息

反应	Human,Mouse,Rat
宿主	Rabbit
克隆性	Polyclonal
预测反应	IF: Mouse bv2 WB: Mus musculus,Homo sapiens
应用	WB IHC
推荐浓度	WB: 1:500 - 1:2000 IHC: 1:50 - 1:200
理论分子量	35kDa/63kDa/77kDa/102kDa
实测分子量	102kDa
形式	Liquid
保存条件	Store at -20°C. Avoid freeze / thaw cycles. Buffer: PBS with 0.01% thiomersal,50% glycerol,pH7.3.
偶联物	Unconjugated
阳性对照	293T,HeLa,Mouse brain,Mouse lung,Mouse spleen,Mouse testis
细胞定位	Cytoplasm,Endoplasmic reticulum,Golgi apparatus,Golgi stack membrane
纯化	Affinity purification

抗原信息

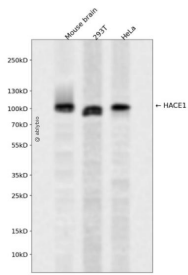
抗原信息	A synthetic peptide corresponding to a sequence within amino acids 1-100 of human HACE1 (NP_065822.2).
序列	MERAMEQLNRLTRSLRRARTVELPEDNETAVYTLMPMVMADQHRVSSELLSNSKFDVNYAFGRVKRSLHIAANCGSVEC LVLLKKGANPNYQDISGCT

靶点信息

研究背景	This gene encodes a HECT domain and ankyrin repeat-containing ubiquitin ligase. The encoded protein is involved in specific tagging of target proteins, leading to their subcellular localization or proteasomal degradation. The protein is a potential tumor suppressor and is involved in the pathophysiology of several tumors, including Wilm's tumor.
------	---

基因ID	57531
基因名	HACE1
Swiss	Q8IYU2
别名	HACE1;SPPRS

产品验证



Western blot analysis of HACE1 expressed in Mouse brain,293T,HeLa using HACE1 Rabbit pAb at 1:1000. Secondary antibody: HRP Goat Anti-Rabbit IgG (H+L) at 1:5000. Lysates/proteins: 30ug per lane. Blocking buffer: 5% non-fat dry milk in TBST. Detection: ECL Enhanced Kit. Exposure time: 120s.

实验步骤

访问官网浏览详情: www.ablybio.cn