

# CLDN2 Rabbit pAb

货号: AYP12892

## 产品信息

反应	Human
宿主	Rabbit
克隆性	Polyclonal
预测反应	<b>IF:</b> Mus musculus
应用	<a href="#">WB</a> <a href="#">IF/ICC</a>
推荐浓度	<b>WB:</b> 1:100 - 1:500 <b>IF/ICC:</b> 1:50 - 1:100
理论分子量	24kDa
实测分子量	20KDa
形式	Liquid
保存条件	Store at -20°C. Avoid freeze / thaw cycles. Buffer: PBS with 0.02% sodium azide,50% glycerol,pH7.3.
偶联物	Unconjugated
阳性对照	A-549,U-937(negative)
细胞定位	Cell junction,Cell membrane,Multi-pass membrane protein,tight junction
纯化	Affinity purification

## 抗原信息

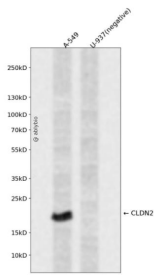
抗原信息	Recombinant fusion protein containing a sequence corresponding to amino acids 30-230 of human CLDN 2 (NP_001164566.1).
序列	WKTSSYVGASIVTAVGFSKGLWMECATHSTGITQCDIYSTLLGLPADIQAAQAMMVTSSAISLACIISVVGMRCTVFCQE SRAKDRVAVAGGVFFILGLLGFIPVAWNLHGILRDFYSPLVPDSMKFEIGEALYLGIISSLFSLIAGIILCFSCSSQRNRSNYY DAYQAQPLATRSSPRPGQPPKVKSEFNYSYSLTGYV

## 靶点信息

研究背景	This gene product belongs to the claudin protein family whose members have been identified as major in tegral membrane proteins localized exclusively at tight junctions. Claudins are expressed in an organ-specific manner and regulate tissue-specific physiologic properties of tight junctions. This protein is expressed in the intestine. Alternatively spliced transcript variants with different 5' untranslated region have been found for this gene.
------	---

基因ID	9075
基因名	CLDN2
Swiss	P57739
别名	CLDN2;claudin-2

## 产品验证



Western blot analysis of CLDN2 expressed in A-549,U-937(negative) using CLDN2 Rabbit pAb at 1:1000. Secondary antibody: HRP Goat Anti-Rabbit IgG (H+L) at 1:5000. Lysates/proteins: 30ug per lane. Blocking buffer: 5% non-fat dry milk in TBST. Detection: ECL Enhanced Kit. Exposure time: 120s.

## 实验步骤

访问官网浏览详情: [www.ablybio.cn](http://www.ablybio.cn)