

SLC16A7 Rabbit pAb

货号: **AYP12886**

产品信息

反应	Human,Mouse,Rat
宿主	Rabbit
克隆性	Polyclonal
预测反应	IF: Human Hodgkin's lymphoma cells IHC: Human Hodgkin's lymphoma cells , Mus musculus WB: Mus musculus
应用	WB IF/ICC
推荐浓度	WB: 1:500 - 1:1000 IF/ICC: 1:50 - 1:200
理论分子量	52kDa
实测分子量	45KDa
形式	Liquid
保存条件	Store at -20°C. Avoid freeze / thaw cycles. Buffer: PBS with 0.01% thiomersal,50% glycerol,pH7.3.
偶联物	Unconjugated
阳性对照	293T,BxPC-3,U-87MG,Rat testis
细胞定位	Cell membrane,Multi-pass membrane protein
纯化	Affinity purification

抗原信息

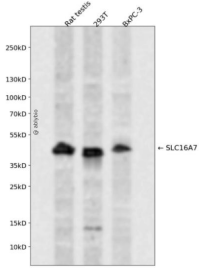
抗原信息	A synthetic peptide corresponding to a sequence within amino acids 400 to the C-terminus of human SLC 16A7 (NP_001257551.1).
序列	TGEYKMYMSCGAIVVAASVWLLIGNAINYRLLAKERKEENARQKTRESEPLSKSKHSEDVNVKVSNAQSVTSERETNI

靶点信息

研究背景	This gene is a member of the monocarboxylate transporter family. Members in this family transport metabolites, such as lactate, pyruvate, and ketone bodies. The protein encoded by this gene catalyzes the proton-linked transport of monocarboxylates and has the highest affinity for pyruvate. This protein has been reported to be more highly expressed in prostate and colorectal cancer specimens when compared to control specimens. Alternative splicing results in multiple transcript variants.
------	---

基因ID	9194
基因名	SLC16A7
Swiss	O60669
别名	SLC16A7;MCT2

产品验证



Western blot analysis of SLC16A7 expressed in Rat testis,293T,BxPC-3 using SLC16A7 Rabbit pAb at 1:1000. Secondary antibody: HRP Goat Anti-Rabbit IgG (H+L) at 1:5000. Lysates/proteins: 30ug per lane . Blocking buffer: 5% non-fat dry milk in TBST. Detection: ECL Enhanced Kit. Exposure time: 120s.

实验步骤

访问官网浏览详情: www.ablybio.cn