

Integrin beta 4 (ITGB4/CD104) Rabbit pAb

货号: AYP12885

产品信息

反应	Human,Mouse,Rat
宿主	Rabbit
克隆性	Polyclonal
预测反应	IHC: HeLa cells , unknown WB: HeLa cells , Rattus norvegicus
应用	WB
推荐浓度	WB: 1:500 - 1:2000
理论分子量	106kDa/194kDa/195kDa/200kDa/202kDa
实测分子量	202kDa
形式	Liquid
保存条件	Store at -20°C. Avoid freeze / thaw cycles. Buffer: PBS with 0.01% thiomersal,50% glycerol,pH7.3.
偶联物	Unconjugated
阳性对照	A431,BxPC-3,mouse pancreas
细胞定位	Cell junction,Cell membrane,Lipid-anchor,Single-pass type I membrane protein,hemidesmosome
纯化	Affinity purification

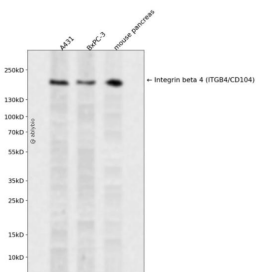
抗原信息

抗原信息	Recombinant fusion protein containing a sequence corresponding to amino acids 28-310 of human Integrin beta 4 (ITGB4/CD104) (NP_000204.3).
序列	NRCKKAPVKSCTECVRVDKDCAYCTDEMFRDRRCNTQAELLAAGCQRESIVVMESFQITEETQIDTTLLRRSQMSPQGLR VRLRPGEERHFELEVFEPLESPVDLYILMDFSNSMSDDLNLKMGQNLARVLSQLTSDYITIGFGKFVDKVSVPQTDMP EKLKEPWPNSDPPFSFKNVISLTEDVDEFRNKLQGERISGNLDAPEGGFDAILQTAVCTRDIGWRPDSTHLLVFSTESAFH YEADGANVLGIMSRNDERCHLDTTGTYTQYRTQDYPSVPTL

靶点信息

研究背景	Integrins are heterodimers comprised of alpha and beta subunits, that are noncovalently associated trans membrane glycoprotein receptors. Different combinations of alpha and beta polypeptides form complexes that vary in their ligand-binding specificities. Integrins mediate cell-matrix or cell-cell adhesion, and transduced signals that regulate gene expression and cell growth. This gene encodes the integrin beta 4 subunit, a receptor for the laminins. This subunit tends to associate with alpha 6 subunit and is likely to play a pivotal role in the biology of invasive carcinoma. Mutations in this gene are associated with epidermolysis bullosa with pyloric atresia. Multiple alternatively spliced transcript variants encoding distinct isoforms have been found for this gene.
基因ID	3691
基因名	ITGB4
Swiss	P16144
别名	ITGB4;CD104;GP150

产品验证



Western blot analysis of Integrin beta 4 (ITGB4/CD104) expressed in A431, BxPC-3, mouse pancreas as using Integrin beta 4 (ITGB4/CD104) Rabbit pAb at 1:1000. Secondary antibody: HRP Goat Anti-Rabbit IgG (H+L) at 1:5000. Lysates/proteins: 30ug per lane. Blocking buffer: 5% non-fat dry milk in TBST. Detection: ECL Enhanced Kit. Exposure time: 120s.

实验步骤

访问官网浏览详情: www.ablybio.cn