

# OsRDR6 Rabbit pAb

货号: **AYP12855**

## 产品信息

反应	Oryza sativa
宿主	Rabbit
克隆性	Polyclonal
预测反应	<b>WB:</b> Oryza sativa
应用	<a href="#">WB</a>
推荐浓度	<b>WB:</b> 1:500 - 1:2000
理论分子量	137kDa
实测分子量	140kDa
形式	Liquid
保存条件	Store at -20°C. Avoid freeze / thaw cycles. Buffer: PBS with 0.01% thiomersal, 50% glycerol, pH7.3.
偶联物	Unconjugated
阳性对照	stems (before flower), leaves sheath (before flower), flower buds (before flower), flag leaves (after flower), flowers, milk seeds
细胞定位	
纯化	Affinity purification

## 抗原信息

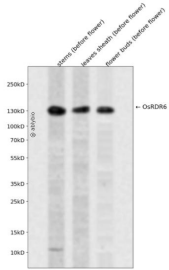
抗原信息	Recombinant protein of Oryza sativa OsRDR6.
序列	

## 靶点信息

研究背景	Involved in the RNA silencing pathway. Probably required for the generation of small interfering RNAs (siRNAs). Regulates shoot apical meristem (SAM) initiation and maintenance and leaf polarization through the trans-acting siRNAs (ta-siRNAs) pathway which probably modulates the expression of the ARF2, ARF3, ARF4, ARF14 and ARF15 genes.
基因ID	4323938

基因名	
Swiss	Q8LHH9
别名	SHL2; SHOOTLESS2

## 产品验证



Western blot analysis of OsRDR6 expressed in stems (before flower),leaves sheath (before flower),flower buds (before flower) using OsRDR6 Rabbit pAb at 1:1000. Secondary antibody: HRP Goat Anti-Rabbit IgG (H+L) at 1:5000. Lysates/proteins: 30ug per lane. Blocking buffer: 5% non-fat dry milk in TBST. Detection : ECL Enhanced Kit. Exposure time: 120s.

## 实验步骤

访问官网浏览详情: [www.ablybio.cn](http://www.ablybio.cn)