

Phospho-MLKL-S441 Rabbit pAb

货号: **AYP12846**

产品信息

反应	Human,Rat
宿主	Rabbit
克隆性	Polyclonal
预测反应	WB: Rattus norvegicus
应用	WB
推荐浓度	WB: 1:500 - 1:2000
理论分子量	53kDa/54kDa
实测分子量	54KDa
形式	Liquid
保存条件	Store at -20°C. Avoid freeze / thaw cycles. Buffer: PBS with 0.01% thiomersal,50% glycerol,pH7.3.
偶联物	Unconjugated
阳性对照	C6
细胞定位	Cell membrane,Cytoplasm
纯化	Affinity purification

抗原信息

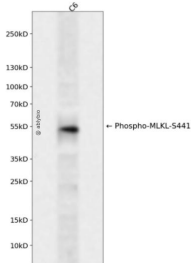
抗原信息	A synthetic phosphorylated peptide around S441 of mouse MLKL (NP_001297542.1).
序列	EPSQR

靶点信息

研究背景	This gene belongs to the protein kinase superfamily. The encoded protein contains a protein kinase-like domain; however, is thought to be inactive because it lacks several residues required for activity. This protein plays a critical role in tumor necrosis factor (TNF)-induced necroptosis, a programmed cell death process, via interaction with receptor-interacting protein 3 (RIP3), which is a key signaling molecule in necroptosis pathway. Inhibitor studies and knockdown of this gene inhibited TNF-induced necrosis. High levels of this protein and RIP3 are associated with inflammatory bowel disease in children. Alternatively spliced transcript variants have been described for this gene.
基因ID	74568

基因名	
Swiss	Q9D2Y4
别名	MLKL; hMLKL; mixed lineage kinase domain-like protein

产品验证



Western blot analysis of Phospho-MLKL-S441 expressed in C6 using Phospho-MLKL-S441 Rabbit pAb at 1:1000. Secondary antibody: HRP Goat Anti-Rabbit IgG (H+L) at 1:5000. Lysates/proteins: 30ug per lane. Blocking buffer: 5% non-fat dry milk in TBST. Detection: ECL Enhanced Kit. Exposure time: 120s.

实验步骤

访问官网浏览详情: www.ablybio.cn